

安徽爱梦智能科技有限公司

地址：安徽省芜湖市弋江区澧港街道中央城财富街一号写字楼1013室

Offices No.1, Centre city Fortune Street, Yijiang district, Wuhu City, Anhui Province, P.R.China

电话：86-0553-8356068

公司网站：www.adream-china.com



**PROFESSIONAL
FILTER MANUFACTURER**

安徽爱梦智能科技有限公司



10级无尘净化车间
100,000 dust-free purification workshop



生产 PRODUCTION



18兆欧纯水系统
18 megohm pure water system



大流量滤芯生产车间
High Flow Filter Production Workshop



PES检测系统
PES detection system



PES冲洗系统
PES flushing system



注塑车间
Injection workshop



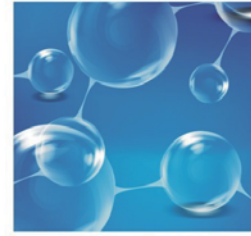
仓库

WAREHOUSE



检测报告

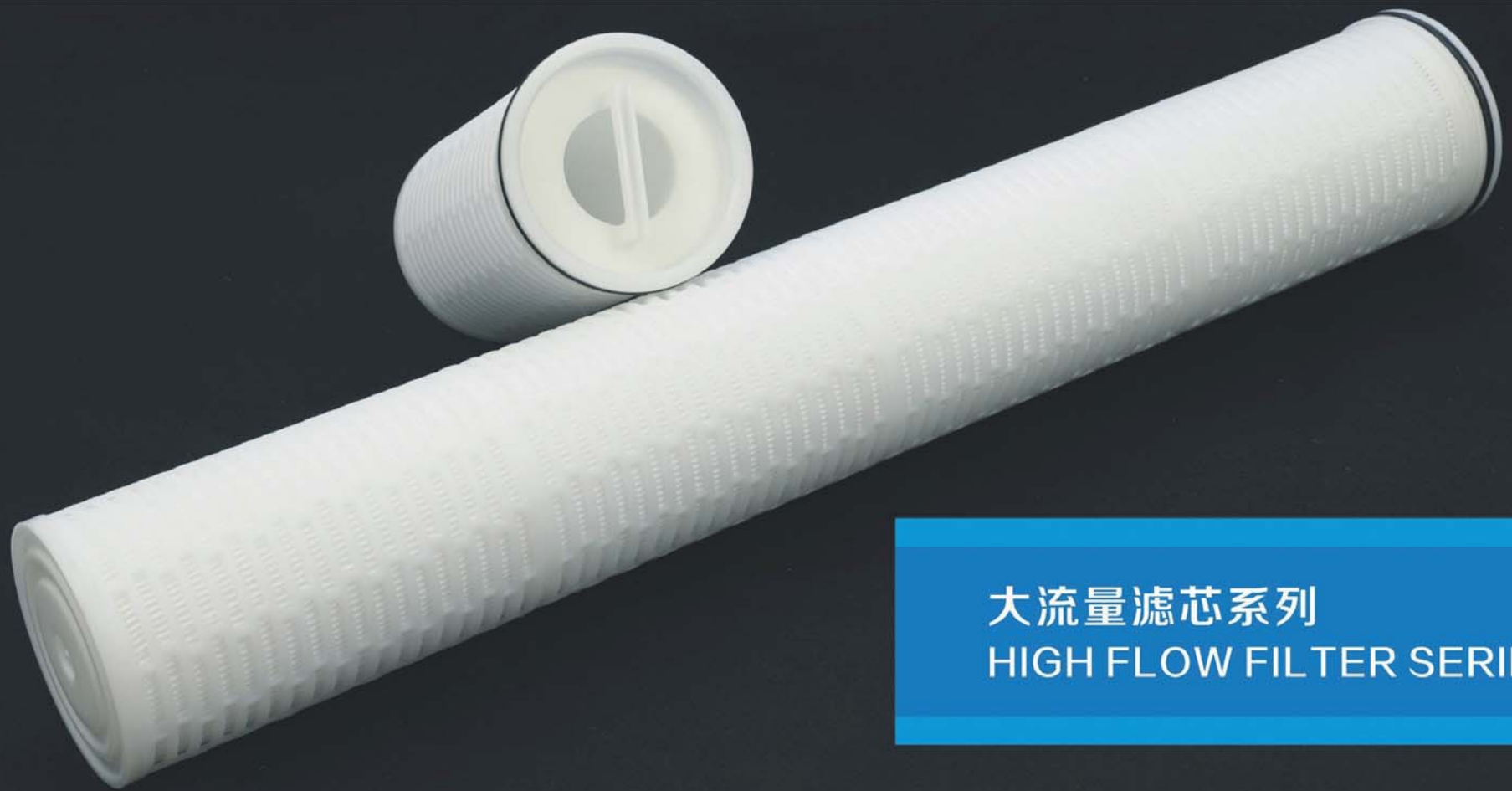
TEST REPORT



目录

DIRECTORY

- 大流量滤芯系列.....01-28
HIGH FLOW FILTER SERIES
- 折叠滤芯系列.....31-44
PLEATED MEMBRANE FILTER SERIES
- 线绕滤芯系列.....47-56
STRING WOUND FILTER SERIES
- 熔喷滤芯系列.....59-70
MELT BLOWN FILTER SERIES
- 活性炭系列.....73-78
CARBON FILTER SERIES
- 泳池滤芯系列.....81-84
PLEATED-SPW FILTER SERIES
- 产品配件.....85-88
PRODUCT ACCESSORIES



大流量滤芯系列 HIGH FLOW FILTER SERIES



大流量滤芯PLDQ系列
High Flow PLDQ Series



大流量滤芯PLSQ系列
High Flow PLSQ Series



大流量滤芯PLTS系列
High Flow PLTS Series



大流量滤芯PLTYW系列
High Flow PLTYW Series



大流量滤芯PL-FB-NLW系列
High Flow PL-FB-NLW Series



大流量滤芯碳纤维系列
High Flow CIC Series



大流量滤芯M1系列
High Flow M1 Series



大流量滤芯M2系列
High Flow M2 Series



大流量滤芯M3系列
High Flow M3 Series



大流量滤芯M4系列
High Flow M4 Series



大流量滤芯PKDQ系列
High Flow PKDQ Series



大流量滤芯PKSQ系列
High Flow PKSQ Series

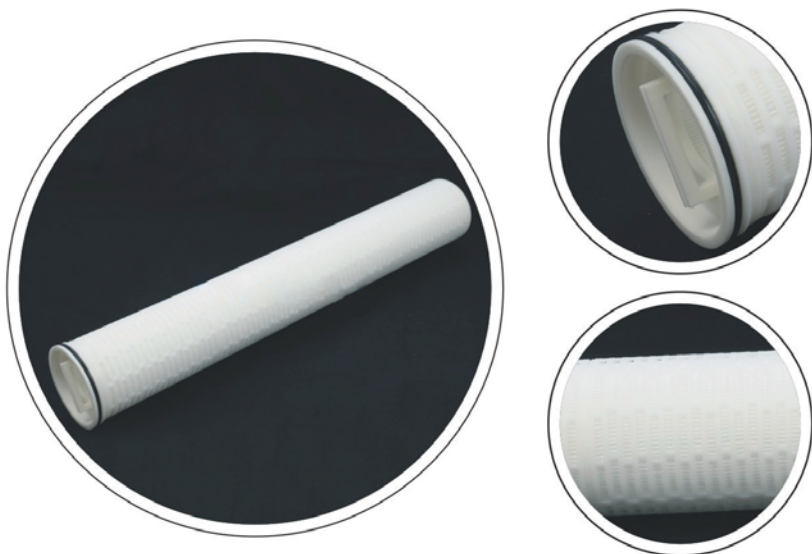


大流量滤芯LD系列
High Flow LD Series



大流量滤芯FSFE系列
High Flow FSFE Series

大流量滤芯PLDQ系列 / High Flow PLDQ Series



大流量滤芯PLDQ系列采用深层精细聚丙烯或玻纤膜做为滤材，拥有6.3和6.5英寸/160和165mm的大直径，无中心杆，单向开口，标准为无中心杆，由内到外的液体流向保证所有污染物颗粒被拦截在滤芯内部，可根据客户需要定制：有中心杆以及由外到内的液体流向，保证所有污染物颗粒被拦截在滤芯外部。超大流量的设计使得在相同流量应用场合滤芯和过滤器的使用量明显减少，大大节约了设备投入成本和人工成本。

High Flow PLDQ Series Filter Cartridges are made from depth fine PP or GF non-woven fabrics. The filter has a big diameter of 6.3 and 6.5 inch/160 and 165mm and no inner core, single open, the inside to outside flow pattern ensure that all the particles will be intercepted at the inside of the filter. Also can do with inner core and outside to inside flow pattern ensure that all the particles will be intercepted at the outside of the filter. The long service life and high flow rate result in low investment and less manpower in many applications.

产品特点 / Product characteristics

滤芯有效过滤面积大，压降低，流量大。

采用深层精细膜材，科学设计多层梯度孔径过滤结构，使得滤芯具有高纳污量的特点，从而延长了滤芯使用寿命，节省用户成本。

全PP材质使得滤芯具有良好的化学相容性，适合多种液体过滤。

High filtration area, high flow rate.

With depth fine non-woven fabrics and scientific design, the filter has a good structure which has high dirt holding capacity, and result in long service life.

100% PP material makes the filter cartridge got excellent chemical compatibility. It is suitable for various liquid filtration.



产品规格 / Product specification

| | |
|--------------------------------------|---|
| 产品尺寸 Dimension | [精度/Removal Rating]: 0.5um,1um,3um,5um,10um,20um,50um,75um,100um [长度/Length]: 20*(508mm), 30*(762mm), 40*(1016mm), 50*(1270mm), 60*(1524mm) [外径/OD]: Ø 160mm / Ø 165mm |
| 结构材料 Material of Constructions | [滤材/Media]: 聚丙烯/玻璃纤维/Polypropylene(PP)/Glass Fiber [导流层/Drain layer]: 国产无纺布/China Non-Woven Fabric [端盖/End cap]: 聚丙烯/Polypropylene(PP) [垫片/密封圈/Gasket]: 硅橡胶, 乙丙橡胶, 丁腈橡胶, 氟橡胶/Silicone, EPDM, NBR, Viton [中心杆/Core]: 聚丙烯/Polypropylene(PP) |
| 技术性能 Performance | [最高操作温度/Max. Operating temperature]: 80°C [最大压差/Max. Operating DP]: 4.0Bar@21°C, 2.4Bar@80°C |

订单信息 / Order Information

| 大流量PLDQ系列 Series Number | 精度 Removal Rating | 尺寸 Length | 中心杆 CORE | 滤材 MEDIA | 垫片 SEAL | 外径 OD |
|----------------------------|---|----------------|-------------|--------------------|----------------|----------|
| FWHFPLDQ | 0.5um=05 | 20*(508mm)=20 | 聚丙烯/PP=P | 聚丙烯/PP=P | 硅橡胶/SILICONE=S | 160mm |
| | 1um=1 | 30*(762mm)=30 | | 玻璃纤维/Glass Fiber=G | 乙丙橡胶/EPDM=E | 165mm |
| | 3um=3 | 40*(1016mm)=40 | | | 丁腈橡胶/NBR=N | |
| | 5um=5 | 50*(1270mm)=50 | | | 氟橡胶/VITON=V | |
| | 10um=10 | 60*(1524mm)=60 | | | | |
| | 20um=20 | | | | | |
| | 50um=50 | | | | | |
| | 75um=75 | | | | | |
| 100um=100 | | | | | | |
| 举例 For Example | FWHFPLDQ-1-20-P-P-S FWHFPLDQ-10-40-P-G-S | | | | | |

大流量滤芯PLSQ系列 / High Flow PLSQ Series



大流量滤芯PLSQ系列采用深层精细聚丙烯或玻纤膜做为滤材，拥有 6.7 英寸 /170mm 的大直径，无中心杆，单向开口，标准为无中心杆，由内到外的液体流向保证所有污染物颗粒被拦截在滤芯内部。可根据客户需要定制：有中心杆以及由外到内的液体流向，保证所有污染物颗粒被拦截在滤芯外部。超大流量的设计使得在相同流量应用场合滤芯和过滤器的使用量明显减少，大大节约了设备投入成本和人工成本。

High Flow PLSQ Series Filter Cartridges are made from depth fine PP or GF non-woven fabrics. The filter has a big diameter of 6.7 inch/170mm and no inner core, single open, the inside to outside flow pattern ensure that all the particles will be intercepted at the inside of the filter. Also can do with inner core and outside to inside flow pattern ensure that all the particles will be intercepted at the outside of the filter. The long service life and high flow rate result in low investment and less manpower in many applications.

产品特点 / Product characteristics

滤芯有效过滤面积大，压降低，流量大。

采用深层精细膜材，科学设计多层梯度孔径过滤结构，使得滤芯具有高纳污量的特点，从而延长了滤芯使用寿命，节省用户成本。

全 PP 材质使得滤芯具有良好的化学相容性，适合多种液体过滤。

High filtration area, high flow rate.

With depth fine non-woven fabrics and scientific design, the filter has a good structure which has high dirt holding capacity, and result in long service life.

100% PP material makes the filter cartridge got excellent chemical compatibility. It is suitable for various liquid filtration.



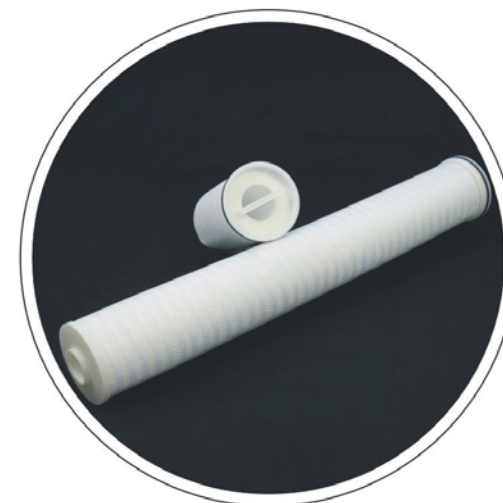
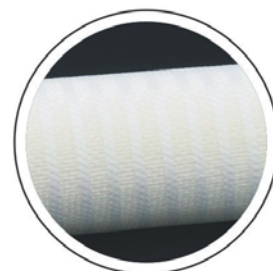
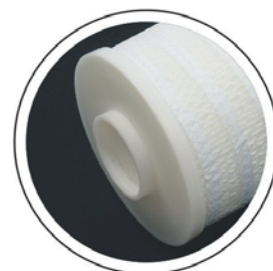
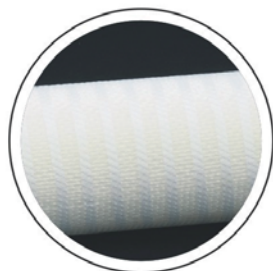
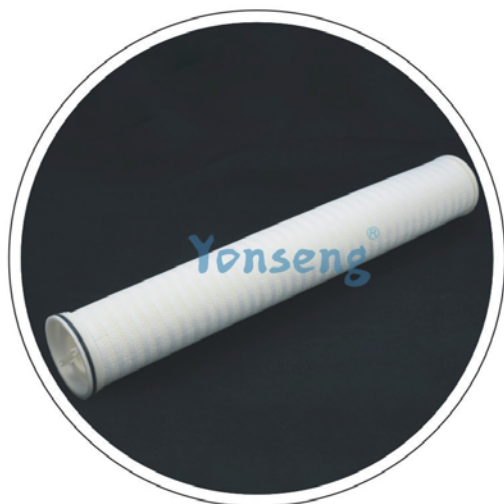
产品规格 / Product specification

| | |
|--------------------------------------|---|
| 产品尺寸 Dimension | [精度/Removal Rating]: 0.5um,1um,3um,5um,10um,20um,50um,75um,100um [长度/Length]: 20*(508mm), 30*(762mm), 40*(1016mm), 50*(1270mm), 60*(1524mm) [外径/OD]: Ø 170mm |
| 结构材料 Material of Constructions | [滤材/Media]: 聚丙烯/玻璃纤维/Polypropylene(PP)/Glass Fiber [导流层/Drain layer]: 国产无纺布/China Non-Woven Fabric [端盖/End cap]: 聚丙烯/Polypropylene(PP) [垫片/密封圈/Gasket]: 硅橡胶, 乙丙橡胶, 丁腈橡胶, 氟橡胶/Silicone, EPDM, NBR, Viton [中心杆/Core]: 聚丙烯/Polypropylene(PP) |
| 技术性能 Performance | [最高操作温度/Max. Operating temperature]: 80°C [最大压差/Max. Operating DP]: 4.0Bar@21°C, 2.4Bar@80°C |

订单信息 / Order Information

| 大流量PLSQ系列 Series Number | 精度 Removal Rating | 尺寸 Length | 中心杆 CORE | 滤材 MEDIA | 垫片 SEAL | 外径 OD |
|----------------------------|---|----------------|-------------|--------------------|----------------|----------|
| FWHFPLSQ | 0.5um=05 | 20*(508mm)=20 | 聚丙烯/PP=P | 聚丙烯/PP=P | 硅橡胶/SILICONE=S | 170mm |
| | 1um=1 | 30*(762mm)=30 | | 玻璃纤维/Glass Fiber=G | 乙丙橡胶/EPDM=E | |
| | 3um=3 | 40*(1016mm)=40 | | | 丁腈橡胶/NBR=N | |
| | 5um=5 | 50*(1270mm)=50 | | | 氟橡胶/VITON=V | |
| | 10um=10 | 60*(1524mm)=60 | | | | |
| | 20um=20 | | | | | |
| | 50um=50 | | | | | |
| | 75um=75 | | | | | |
| 100um=100 | | | | | | |
| 举例 For Example | FWHFPLSQ-1-20-P-P-S FWHFPLSQ-10-40-P-G-S | | | | | |

大流量滤芯PLTS系列 / High Flow PLTS Series



大流量滤芯PLTS系列采用深层精细聚丙烯或玻纤膜做为滤材，拥有6.3英寸/160mm的大直径，无中心杆，单向开口，标准为无中心杆，由内到外的液体流向保证所有污染物颗粒被拦截在滤芯内部。可根据客户需要定制：有中心杆以及由外到内的液体流向，保证所有污染物颗粒被拦截在滤芯外部。超大流量的设计使得在相同流量应用场合滤芯和过滤器的使用量明显减少，大大节约了设备投入成本和人工成本。

High Flow PLTS Series Filter Cartridges are made from depth fine PP or GF non-woven fabrics. The filter has a big diameter of 6.3 inch/160mm and no inner core, the inside to outside flow pattern ensure that all the particles will be intercepted at the inside of the filter. Also can do with inner core and outside to inside flow pattern ensure that all the particles will be intercepted at the outside of the filter. The long service life and high flow rate result in low investment and less manpower in many applications.

产品特点 / Product characteristics

滤芯有效过滤面积大，压降低，流量大。

采用深层精细膜材，科学设计多层梯度孔径过滤结构，使得滤芯具有高纳污量的特点，从而延长了滤芯使用寿命，节省用户成本。

全PP材质使得滤芯具有良好的化学相容性，适合多种液体过滤。

High filtration area, high flow rate.

With depth fine non-woven fabrics and scientific design, the filter has a good structure which has high dirt holding capacity, and result in long service life.

100% PP material makes the filter cartridge got excellent chemical compatibility. It is suitable for various liquid filtration.

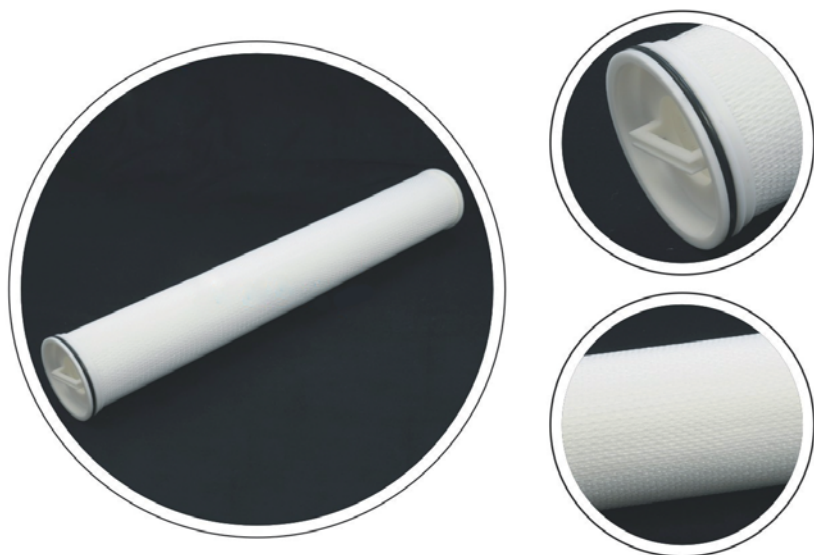
产品规格 / Product specification

| | |
|--------------------------------------|---|
| 产品尺寸 Dimension | [精度/Removal Rating]: 0.5um,1um,3um,5um,10um,20um,50um,75um,100um [长度/Length]: 20*(508mm), 30*(762mm), 40*(1016mm), 50*(1270mm), 60*(1524mm) [外径/OD]: Ø 160mm |
| 结构材料 Material of Constructions | [滤材/Media]: 聚丙烯/玻璃纤维/Polypropylene(PP)/Glass Fiber [导流层/Drain layer]: 国产无纺布/China Non-Woven Fabric [端盖/End cap]: 聚丙烯/Polypropylene(PP) [垫片/密封圈/Gasket]: 硅橡胶, 乙丙橡胶, 丁腈橡胶, 氟橡胶/Silicone, EPDM, NBR, Viton [中心杆/Core]: 聚丙烯/Polypropylene(PP) |
| 技术性能 Performance | [最高操作温度/Max. Operating temperature]: 80°C [最大压差/Max. Operating DP]: 4.0Bar@21°C, 2.4Bar@80°C |

订单信息 / Order Information

| 大流量PLTS系列 Series Number | 精度 Removal Rating | 尺寸 Length | 中心杆 CORE | 滤材 MEDIA | 垫片 SEAL | 外径 OD |
|----------------------------|---|----------------|-------------|--------------------|----------------|----------|
| FWHFPLTS | 0.5um=05 | 20*(508mm)=20 | 聚丙烯/PP=P | 聚丙烯/PP=P | 硅橡胶/SILICONE=S | 160mm |
| | 1um=1 | 30*(762mm)=30 | | 玻璃纤维/Glass Fiber=G | 乙丙橡胶/EPDM=E | |
| | 3um=3 | 40*(1016mm)=40 | | | 丁腈橡胶/NBR=N | |
| | 5um=5 | 50*(1270mm)=50 | | | 氟橡胶/VITON=V | |
| | 10um=10 | 60*(1524mm)=60 | | | | |
| | 20um=20 | | | | | |
| | 50um=50 | | | | | |
| | 75um=75 | | | | | |
| 100um=100 | | | | | | |
| 举例 For Example | FWHFPLTS-1-20-P-P-S FWHFPLTS-10-40-P-G-S | | | | | |

大流量滤芯PLTYW系列 / High Flow PLTYW Series



大流量滤芯PLTYW系列采用深层精细聚丙烯或玻纤膜做为滤材，拥有6.3英寸/160mm的大直径，无中心杆，单向开口，标准为无中心杆，由内到外的液体流向保证所有污染物颗粒被拦截在滤芯内部。可根据客户需要定制：有中心杆以及由外到内的液体流向，保证所有污染物颗粒被拦截在滤芯外部。超大流量的设计使得在相同流量应用场合滤芯和过滤器器的使用量明显减少，大大节约了设备投入成本和人工成本。

High Flow PLTYW Series Filter Cartridges are made from depth fine PP or GF non-woven fabrics. The filter has a big diameter of 6.3 inch/160mm and no inner core, single open, the inside to outside flow pattern ensure that all the particles will be intercepted at the inside of the filter. Also can do with inner core and outside to inside flow pattern ensure that all the particles will be intercepted at the outside of the filter. The long service life and high flow rate result in low investment and less manpower in many applications.

产品特点 / Product characteristics

滤芯有效过滤面积大，压降低，流量大。

采用深层精细膜材，科学设计多层梯度孔径过滤结构，使得滤芯具有高纳污量的特点，从而延长了滤芯使用寿命，节省用户成本。

全PP材质使得滤芯具有良好的化学相容性，适合多种液体过滤。

High filtration area, high flow rate.

With depth fine non-woven fabrics and scientific design, the filter has a good structure which has high dirt holding capacity, and result in long service life.

100% PP material makes the filter cartridge got excellent chemical compatibility. It is suitable for various liquid filtration.



产品规格 / Product specification

| | |
|---|--|
| 产品尺寸 Dimension | [精度/Removal Rating]: 0.5um,1um,3um,5um,10um,20um,50um,75um,100um |
| | [长度/Length]: 20*(508mm), 30*(762mm), 40*(1016mm), 50*(1270mm), 60*(1524mm) |
| | [外径/OD]: Ø 160mm |
| 结构材料 Material of Constructions | [滤材/Media]: 聚丙烯/玻璃纤维/Polypropylene(PP)/Glass Fiber |
| | [导流层/Drain layer]: 国产无纺布/China Non-Woven Fabric |
| | [端盖/End cap]: 聚丙烯/Polypropylene(PP) |
| | [垫片/密封圈/Gasket]: 硅橡胶, 乙丙橡胶, 丁腈橡胶, 氟橡胶/Silicone, EPDM, NBR, Viton |
| | [中心杆/Core]: 聚丙烯/Polypropylene(PP) |
| 技术性能 Performance | [最高操作温度/Max. Operating temperature]: 80°C |
| | [最大压差/Max. Operating DP]: 4.0Bar@21°C, 2.4Bar@80°C |

订单信息 / Order Information

| 大流量PLTYW系列 Series Number | 精度 Removal Rating | 尺寸 Length | 中心杆 CORE | 滤材 MEDIA | 垫片 SEAL | 外径 OD |
|-----------------------------|-----------------------|----------------|-------------|--------------------|----------------|----------|
| FWHFPLTYW | 0.5um=05 | 20*(508mm)=20 | 聚丙烯/PP=P | 聚丙烯/PP=P | 硅橡胶/SILICONE=S | 160mm |
| | 1um=1 | 30*(762mm)=30 | | 玻璃纤维/Glass Fiber=G | 乙丙橡胶/EPDM=E | |
| | 3um=3 | 40*(1016mm)=40 | | | 丁腈橡胶/NBR=N | |
| | 5um=5 | 50*(1270mm)=50 | | | 氟橡胶/VITON=V | |
| | 10um=10 | 60*(1524mm)=60 | | | | |
| | 20um=20 | | | | | |
| | 50um=50 | | | | | |
| | 75um=75 | | | | | |
| | 100um=100 | | | | | |
| 举例 For Example | FWHFPLTYW-1-20-P-P-S | | | | | |
| | FWHFPLTYW-10-40-P-G-S | | | | | |

大流量滤芯PL-FB-NLW系列 / High Flow PL-FB-NLW Series



大流量滤芯PL-FB-NLW系列采用深层精细聚丙烯或玻纤膜做为滤材，拥有 6.3 英寸 /160mm 的大直径，无中心杆，单向开口，标准为无中心杆，由内到外的液体流向保证所有污染物颗粒被拦截在滤芯内部，可根据客户需要定制：有中心杆以及由外到内的液体流向，保证所有污染物颗粒被拦截在滤芯外部，超大流量的设计使得在相同流量应用场合滤芯和过滤器的使用量明显减少，大大节约了设备投入成本和人工成本。

High Flow PL-FB-NLW Series Filter Cartridges are made from depth fine PP or GF non-woven fabrics. The filter has a big diameter of 6.3 inch/160mm and no inner core, single open, the inside to outside flow pattern ensure that all the particles will be intercepted at the inside of the filter. Also can do with inner core and outside to inside flow pattern ensure that all the particles will be intercepted at the outside of the filter. The long service life and high flow rate result in low investment and less manpower in many applications.

产品特点 / Product characteristics

滤芯有效过滤面积大，压降低，流量大。

采用深层精细膜材，科学设计多层梯度孔径过滤结构，使得滤芯具有高纳污量的特点，从而延长了滤芯使用寿命，节省用户成本。

全 PP 材质使得滤芯具有良好的化学相容性，适合多种液体过滤。

High filtration area, high flow rate.

With depth fine non-woven fabrics and scientific design, the filter has a good structure which has high dirt holding capacity, and result in long service life.

100% PP material makes the filter cartridge got excellent chemical compatibility. It is suitable for various liquid filtration.



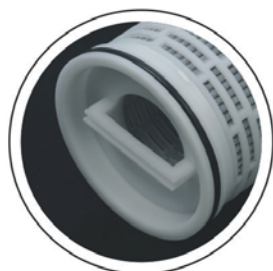
产品规格 / Product specification

| | |
|--------------------------------------|---|
| 产品尺寸 Dimension | [精度/Removal Rating]: 0.5um,1um,3um,5um,10um,20um,50um,75um,100um [长度/Length]: 20*(508mm), 30*(762mm), 40*(1016mm), 50*(1270mm), 60*(1524mm) [外径/OD]: Ø 160mm |
| 结构材料 Material of Constructions | [滤材/Media]: 聚丙烯/玻璃纤维/Polypropylene(PP)/Glass Fiber [导流层/Drain layer]: 国产无纺布/China Non-Woven Fabric [端盖/End cap]: 聚丙烯/Polypropylene(PP) [垫片/密封圈/Gasket]: 硅橡胶, 乙丙橡胶, 丁腈橡胶, 氟橡胶/Silicone, EPDM, NBR, Viton [中心杆/Core]: 聚丙烯/Polypropylene(PP) |
| 技术性能 Performance | [最高操作温度/Max. Operating temperature]: 80°C [最大压差/Max. Operating DP]: 4.0Bar@21°C, 2.4Bar@80°C |

订单信息 / Order Information

| 大流量PL-FB-NLW系列 Series Number | 精度 Removal Rating | 尺寸 Length | 中心杆 CORE | 滤材 MEDIA | 垫片 SEAL | 外径 OD |
|---------------------------------|---|----------------|-------------|--------------------|----------------|----------|
| FWHFPL-FB-NLW | 0.5um=05 | 20*(508mm)=20 | 聚丙烯/PP=P | 聚丙烯/PP=P | 硅橡胶/SILICONE=S | 160mm |
| | 1um=1 | 30*(762mm)=30 | | 玻璃纤维/Glass Fiber=G | 乙丙橡胶/EPDM=E | |
| | 3um=3 | 40*(1016mm)=40 | | | 丁腈橡胶/NBR=N | |
| | 5um=5 | 50*(1270mm)=50 | | | 氟橡胶/VITON=V | |
| | 10um=10 | 60*(1524mm)=60 | | | | |
| | 20um=20 | | | | | |
| | 50um=50 | | | | | |
| | 75um=75 | | | | | |
| 100um=100 | | | | | | |
| 举例 For Example | FWHFPL-FB-NLW-1-20-P-P-S FWHFPL-FB-NLW-10-40-P-G-S | | | | | |

大流量滤芯碳纤维系列 / High Flow CIC Series



大流量滤芯碳纤维系列采用碳纤维膜做为滤材，拥有 6.3和6.5 英寸 /160和165mm 的大直径，单向开口，有中心杆以及由外到内的液体流向，保证所有污染物颗粒被拦截在滤芯外部。超大流量的设计使得在相同流量应用场合滤芯和过滤器的使用量明显减少，大大节约了设备投入成本和人工成本。

High Flow CIC Series Filter Cartridges are made from carbon impregnated cellulose. The filter has a big diameter of 6.3 and 6.5 inch/160 and 165mm and with inner core, single open, the outside to inside flow pattern ensure that all the particles will be intercepted at the outside of the filter. The long service life and high flow rate result in low investment and less manpower in many applications.

产品特点 / Product characteristics

滤芯有效过滤面积大，压降低，流量大。

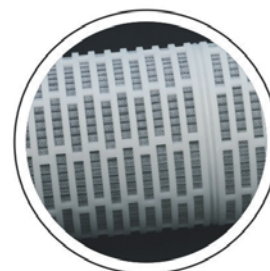
采用深层精细膜材，科学设计多层梯度孔径过滤结构，使得滤芯具有高纳污量的特点，从而延长了滤芯使用寿命，节省用户成本。

全碳纤维材质使得滤芯具有良好的吸苯效率。

High filtration area, high flow rate.

With depth fine non-woven fabrics and scientific design, the filter has a good structure which has high dirt holding capacity, and result in long service life.

100% carbon impregnated cellulose material makes the filter cartridge got excellent Benzene absorption efficiency.



产品规格 / Product specification

| | |
|--------------------------------------|--|
| 产品尺寸 Dimension | [精度/Removal Rating]: 0.5um,1um,3um,5um,10um,20um,50um,75um,100um |
| | [长度/Length]: 20*(508mm), 30*(762mm), 40*(1016mm), 50*(1270mm), 60*(1524mm) |
| | [外径/OD]: Ø 160mm / Ø 165mm |
| 结构材料 Material of Constructions | [滤材/Media]: 碳纤维32/碳纤维40/CIC32 / CIC 40 |
| | [导流层/Drain layer]: 国产无纺布/China Non-Woven Fabric |
| | [端盖/End cap]: 聚丙烯/Polypropylene(PP) |
| | [垫片/密封圈/Gasket]: 硅橡胶, 乙丙橡胶, 丁腈橡胶, 氟橡胶/Silicone, EPDM, NBR, Viton |
| | [中心杆/Core]: 聚丙烯/Polypropylene(PP) |
| 技术性能 Performance | [最高操作温度/Max. Operating temperature]: 80°C |
| | [最大压差/Max. Operating DP]: 4.0Bar@21°C, 2.4Bar@80°C |

订单信息 / Order Information

| 大流量碳纤维系列 Series Number | 精度 Removal Rating | 尺寸 Length | 中心杆 CORE | 滤材 MEDIA | 垫片 SEAL | 外径 OD |
|---------------------------|-------------------------|----------------|-------------|---------------|----------------|----------|
| FWHFPLCIC | 0.5um=05 | 20*(508mm)=20 | 聚丙烯/PP=P | 碳纤维/CIC32=C32 | 硅橡胶/SILICONE=S | 160mm |
| | 1um=1 | 30*(762mm)=30 | | 碳纤维/CIC40=C40 | 乙丙橡胶/EPDM=E | 165mm |
| | 3um=3 | 40*(1016mm)=40 | | | 丁腈橡胶/NBR=N | |
| | 5um=5 | 50*(1270mm)=50 | | | 氟橡胶/VITON=V | |
| | 10um=10 | 60*(1524mm)=60 | | | | |
| | 20um=20 | | | | | |
| | 50um=50 | | | | | |
| | 75um=75 | | | | | |
| 100um=100 | | | | | | |
| 举例 For Example | FWHFPLCIC-1-20-P-C32-S | | | | | |
| | FWHFPLCIC-10-40-P-C40-S | | | | | |

大流量滤芯M1系列 / High Flow M1 Series



大流量滤芯M1系列采用深层精细聚丙烯或玻纤膜做为滤材，拥有 6.5 英寸 /165mm 的大直径，单向开口，有中心杆以及由外到内的液体流向，保证所有污染物颗粒被拦截在滤芯外部。超大流量的设计使得在相同流量应用场合滤芯和过滤器的使用量明显减少，大大节约了设备投入成本和人工成本。

High Flow M1 Series Filter Cartridges are made from depth fine PP or GF non-woven fabrics. The filter has a big diameter of 6.5 inch/165mm and with inner core, single open, the outside to inside flow pattern ensure that all the particles will be intercepted at the outside of the filter. The long service life and high flow rate result in low investment and less manpower in many applications.

产品特点 / Product characteristics

滤芯有效过滤面积大，压降低，流量大。

采用深层精细膜材，科学设计多层梯度孔径过滤结构，使得滤芯具有高纳污量的特点，从而延长了滤芯使用寿命，节省用户成本。

全 PP 材质使得滤芯具有良好的化学相容性，适合多种液体过滤。

High filtration area, high flow rate.

With depth fine non-woven fabrics and scientific design, the filter has a good structure which has high dirt holding capacity, and result in long service life.

100% PP material makes the filter cartridge got excellent chemical compatibility. It is suitable for various liquid filtration.



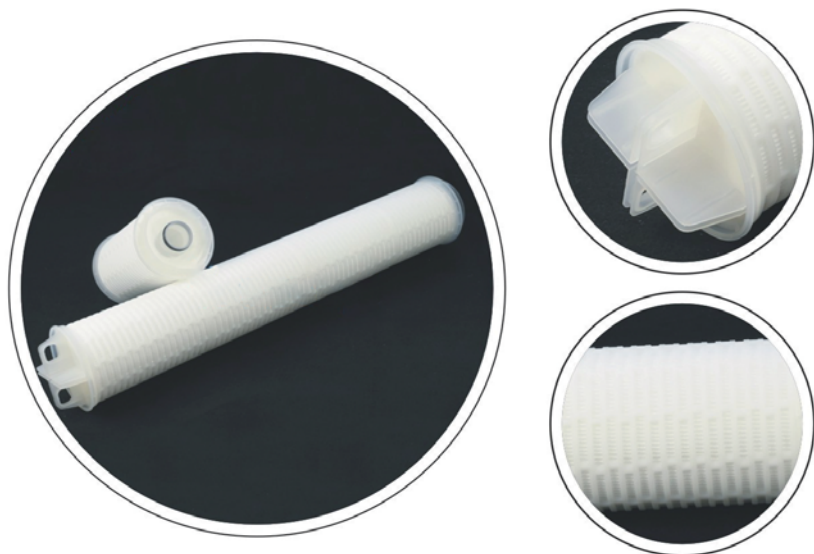
产品规格 / Product specification

| | |
|--------------------------------------|--|
| 产品尺寸 Dimension | [精度/Removal Rating]: 0.5um,1um,3um,5um,10um,20um,50um,75um,100um [长度/Length]: 20*(508mm), 30*(762mm), 40*(1016mm), 50*(1270mm), 60*(1524mm) [外径/OD]: Ø 165mm |
| 结构材料 Material of Constructions | [滤材/Media]: 聚丙烯/玻璃纤维/Polypropylene(PP)/Glass Fiber [导流层/Drain layer]: 国产无纺布/美国无纺布/China Non-Woven Fabric / USA Non-Woven Fabric [端盖/End cap]: 聚丙烯/Polypropylene(PP) [垫片/密封圈/Gasket]: 硅橡胶, 乙丙橡胶, 丁腈橡胶, 氟橡胶/Silicone, EPDM, NBR, Viton [中心杆/Core]: 聚丙烯/Polypropylene(PP) |
| 技术性能 Performance | [最高操作温度/Max. Operating temperature]: 80°C [最大压差/Max. Operating DP]: 4.0Bar@21°C, 2.4Bar@80°C |

订单信息 / Order Information

| 大流量M1系列 Series Number | 精度 Removal Rating | 尺寸 Length | 中心杆 CORE | 滤材 MEDIA | 垫片 SEAL | 外径 OD |
|--------------------------|---|----------------|-------------|--------------------|----------------|----------|
| FWHFM1 | 0.5um=05 | 20*(508mm)=20 | 聚丙烯/PP=P | 聚丙烯/PP=P | 硅橡胶/SILICONE=S | 165mm |
| | 1um=1 | 30*(762mm)=30 | | 玻璃纤维/Glass Fiber=G | 乙丙橡胶/EPDM=E | |
| | 3um=3 | 40*(1016mm)=40 | | | 丁腈橡胶/NBR=N | |
| | 5um=5 | 50*(1270mm)=50 | | | 氟橡胶/VITON=V | |
| | 10um=10 | 60*(1524mm)=60 | | | | |
| | 20um=20 | | | | | |
| | 50um=50 | | | | | |
| | 75um=75 | | | | | |
| 100um=100 | | | | | | |
| 举例 For Example | FWHFM1-1-20-P-P-S FWHFM1-10-40-P-G-S | | | | | |

大流量滤芯M2系列 / High Flow M2 Series



大流量滤芯M2系列采用深层精细聚丙烯或玻纤膜做为滤材，拥有 6.5 英寸 /165mm 的大直径，单向开口，有中心杆以及由外到内的液体流向，保证所有污染物颗粒被拦截在滤芯外部。超大流量的设计使得在相同流量应用场合滤芯和过滤器的使用量明显减少，大大节约了设备投入成本和人工成本。

High Flow M2 Series Filter Cartridges are made from depth fine PP or GF non-woven fabrics. The filter has a big diameter of 6.5 inch/165mm and with inner core, single open, the outside to inside flow pattern ensure that all the particles will be intercepted at the outside of the filter. The long service life and high flow rate result in low investment and less manpower in many applications.

产品特点 / Product characteristics

滤芯有效过滤面积大，压降低，流量大。

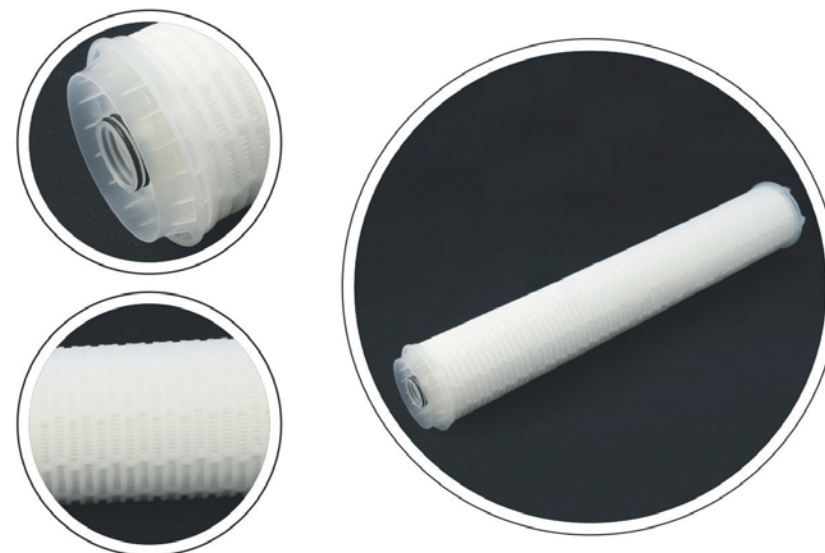
采用深层精细膜材，科学设计多层梯度孔径过滤结构，使得滤芯具有高纳污量的特点，从而延长了滤芯使用寿命，节省用户成本。

全 PP 材质使得滤芯具有良好的化学相容性，适合多种液体过滤。

High filtration area, high flow rate.

With depth fine non-woven fabrics and scientific design, the filter has a good structure which has high dirt holding capacity, and result in long service life.

100% PP material makes the filter cartridge got excellent chemical compatibility. It is suitable for various liquid filtration.



产品规格 / Product specification

| | |
|--------------------------------------|--|
| 产品尺寸 Dimension | [精度/Removal Rating]: 0.5um,1um,3um,5um,10um,20um,50um,75um,100um [长度/Length]: 20*(508mm), 30*(762mm), 40*(1016mm), 50*(1270mm), 60*(1524mm) [外径/OD]: Ø 165mm |
| 结构材料 Material of Constructions | [滤材/Media]: 聚丙烯/玻璃纤维/Polypropylene(PP)/Glass Fiber [导流层/Drain layer]: 国产无纺布/美国无纺布/China Non-Woven Fabric / USA Non-Woven Fabric [端盖/End cap]: 聚丙烯/Polypropylene(PP) [垫片/密封圈/Gasket]: 硅橡胶, 乙丙橡胶, 丁腈橡胶, 氟橡胶/Silicone, EPDM, NBR, Viton [中心杆/Core]: 聚丙烯/Polypropylene(PP) |
| 技术性能 Performance | [最高操作温度/Max. Operating temperature]: 80°C [最大压差/Max. Operating DP]: 4.0Bar@21°C, 2.4Bar@80°C |

订单信息 / Order Information

| 大流量M2系列 Series Number | 精度 Removal Rating | 尺寸 Length | 中心杆 CORE | 滤材 MEDIA | 垫片 SEAL | 外径 OD |
|--------------------------|---|----------------|-------------|--------------------|----------------|----------|
| FWHFM2 | 0.5um=05 | 20*(508mm)=20 | 聚丙烯/PP=P | 聚丙烯/PP=P | 硅橡胶/SILICONE=S | 165mm |
| | 1um=1 | 30*(762mm)=30 | | 玻璃纤维/Glass Fiber=G | 乙丙橡胶/EPDM=E | |
| | 3um=3 | 40*(1016mm)=40 | | | 丁腈橡胶/NBR=N | |
| | 5um=5 | 50*(1270mm)=50 | | | 氟橡胶/VITON=V | |
| | 10um=10 | 60*(1524mm)=60 | | | | |
| | 20um=20 | | | | | |
| | 50um=50 | | | | | |
| | 75um=75 | | | | | |
| 100um=100 | | | | | | |
| 举例 For Example | FWHFM2-1-20-P-P-S FWHFM2-10-40-P-G-S | | | | | |

大流量滤芯M3系列 / High Flow M3 Series



大流量滤芯M3系列采用深层精细聚丙烯或玻纤膜做为滤材，拥有6英寸/152mm的大直径，单向开口，有中心杆以及由外到内的液体流向，保证所有污染物颗粒被拦截在滤芯外部。超大流量的设计使得在相同流量应用场合滤芯和过滤器的使用量明显减少，大大节约了设备投入成本和人工成本。

High Flow M3 Series Filter Cartridges are made from depth fine PP or GF non-woven fabrics. The filter has a big diameter of 6 inch/152mm and with inner core, single open, the outside to inside flow pattern ensure that all the particles will be intercepted at the outside of the filter. The long service life and high flow rate result in low investment and less manpower in many applications.

产品特点 / Product characteristics

滤芯有效过滤面积大，压降低，流量大。

采用深层精细膜材，科学设计多层梯度孔径过滤结构，使得滤芯具有高纳污量的特点，从而延长了滤芯使用寿命，节省用户成本。

全PP材质使得滤芯具有良好的化学相容性，适合多种液体过滤。

High filtration area, high flow rate.

With depth fine non-woven fabrics and scientific design, the filter has a good structure which has high dirt holding capacity, and result in long service life.

100% PP material makes the filter cartridge got excellent chemical compatibility. It is suitable for various liquid filtration.



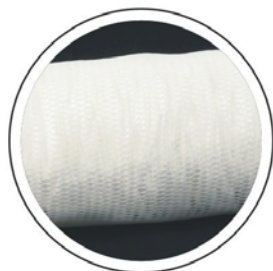
产品规格 / Product specification

| | |
|---|--|
| 产品尺寸 Dimension | [精度/Removal Rating]: 0.5um,1um,3um,5um,10um,20um,50um,75um,100um |
| | [长度/Length]: 20*(508mm), 30*(762mm), 40*(1016mm), 50*(1270mm), 60*(1524mm) |
| | [外径/OD]: Ø 152mm |
| 结构材料 Material of Constructions | [滤材/Media]: 聚丙烯/玻璃纤维/Polypropylene(PP)/Glass Fiber |
| | [导流层/Drain layer]: 国产无纺布/China Non-Woven Fabric |
| | [端盖/End cap]: 聚丙烯/Polypropylene(PP) |
| | [垫片/密封圈/Gasket]: 硅橡胶, 乙丙橡胶, 丁腈橡胶, 氟橡胶/Silicone, EPDM, NBR, Viton |
| | [中心杆/Core]: 聚丙烯/Polypropylene(PP) |
| 技术性能 Performance | [最高操作温度/Max. Operating temperature]: 80°C |
| | [最大压差/Max. Operating DP]: 4.0Bar@21°C, 2.4Bar@80°C |

订单信息 / Order Information

| 大流量M3系列 Series Number | 精度 Removal Rating | 尺寸 Length | 中心杆 CORE | 滤材 MEDIA | 垫片 SEAL | 外径 OD |
|--------------------------|----------------------|----------------|-------------|--------------------|----------------|----------|
| FWHFM3 | 0.5um=05 | 20*(508mm)=20 | 聚丙烯/PP=P | 聚丙烯/PP=P | 硅橡胶/SILICONE=S | 152mm |
| | 1um=1 | 30*(762mm)=30 | | 玻璃纤维/Glass Fiber=G | 乙丙橡胶/EPDM=E | |
| | 3um=3 | 40*(1016mm)=40 | | | 丁腈橡胶/NBR=N | |
| | 5um=5 | 50*(1270mm)=50 | | | 氟橡胶/VITON=V | |
| | 10um=10 | 60*(1524mm)=60 | | | | |
| | 20um=20 | | | | | |
| | 50um=50 | | | | | |
| | 75um=75 | | | | | |
| | 100um=100 | | | | | |
| 举例 For Example | FWHFM3-1-20-P-P-S | | | | | |
| | FWHFM3-10-40-P-G-S | | | | | |

大流量滤芯M4系列 / High Flow M4 Series



大流量滤芯M4系列采用深层精细聚丙烯或玻纤膜做为滤材，拥有6英寸/152mm的大直径，单向开口，有中心杆以及由外到内的液体流向，保证所有污染物颗粒被拦截在滤芯外部。超大流量的设计使得在相同流量应用场合滤芯和过滤器的使用量明显减少，大大节约了设备投入成本和人工成本。

High Flow M4 Series Filter Cartridges are made from depth fine PP or GF non-woven fabrics. The filter has a big diameter of 6 inch/152mm and with inner core, single open, the outside to inside flow pattern ensure that all the particles will be intercepted at the outside of the filter. The long service life and high flow rate result in low investment and less manpower in many applications.

产品特点 / Product characteristics

滤芯采用横向打折工艺，有效过滤面积大，压降低，流量大。
采用深层精细膜材，科学设计多层梯度孔径过滤结构，使得滤芯具有高纳污量的特点，从而延长了滤芯使用寿命，节省用户成本。
全PP材质使得滤芯具有良好的化学相容性，适合多种液体过滤。

New horizontal Pleated artwork, High filtration area, high flow rate.

With depth fine non-woven fabrics and scientific design, the filter has a good structure which has high dirt holding capacity, and result in long service life.

100% PP material makes the filter cartridge got excellent chemical compatibility. It is suitable for various liquid filtration.



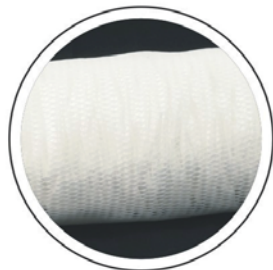
产品规格 / Product specification

| | |
|--------------------------------------|---|
| 产品尺寸 Dimension | [精度/Removal Rating]: 0.5um,1um,3um,5um,10um,20um,50um,75um,100um [长度/Length]: 20*(508mm), 30*(762mm), 40*(1016mm), 50*(1270mm), 60*(1524mm) [外径/OD]: Ø 152mm |
| 结构材料 Material of Constructions | [滤材/Media]: 聚丙烯/玻璃纤维/Polypropylene(PP)/Glass Fiber [导流层/Drain layer]: 美国无纺布/USA Non-Woven Fabric [端盖/End cap]: 聚丙烯/Polypropylene(PP) [垫片/密封圈/Gasket]: 硅橡胶, 乙丙橡胶, 丁腈橡胶, 氟橡胶/Silicone, EPDM, NBR, Viton [中心杆/Core]: 聚丙烯/Polypropylene(PP) |
| 技术性能 Performance | [最高操作温度/Max. Operating temperature]: 80°C [最大压差/Max. Operating DP]: 4.0Bar@21°C, 2.4Bar@80°C |

订单信息 / Order Information

| 大流量M4系列 Series Number | 精度 Removal Rating | 尺寸 Length | 中心杆 CORE | 滤材 MEDIA | 垫片 SEAL | 外径 OD |
|--------------------------|---|----------------|-------------|--------------------|----------------|----------|
| FWHFM4 | 0.5um=05 | 20*(508mm)=20 | 聚丙烯/PP=P | 聚丙烯/PP=P | 硅橡胶/SILICONE=S | 152mm |
| | 1um=1 | 30*(762mm)=30 | | 玻璃纤维/Glass Fiber=G | 乙丙橡胶/EPDM=E | |
| | 3um=3 | 40*(1016mm)=40 | | | 丁腈橡胶/NBR=N | |
| | 5um=5 | 50*(1270mm)=50 | | | 氟橡胶/VITON=V | |
| | 10um=10 | 60*(1524mm)=60 | | | | |
| | 20um=20 | | | | | |
| | 50um=50 | | | | | |
| | 75um=75 | | | | | |
| 100um=100 | | | | | | |
| 举例 For Example | FWHFM4-1-20-P-P-S FWHFM4-10-40-P-G-S | | | | | |

大流量滤芯M4系列 / High Flow M4 Series



大流量滤芯M4系列采用深层精细聚丙烯或玻纤膜做为滤材，拥有6英寸/152mm的大直径，单向开口，有中心杆以及由外到内的液体流向，保证所有污染物颗粒被拦截在滤芯外部。超大流量的设计使得在相同流量应用场合滤芯和过滤器的使用量明显减少，大大节约了设备投入成本和人工成本。

High Flow M4 Series Filter Cartridges are made from depth fine PP or GF non-woven fabrics. The filter has a big diameter of 6 inch/152mm and with inner core, single open, the outside to inside flow pattern ensure that all the particles will be intercepted at the outside of the filter. The long service life and high flow rate result in low investment and less manpower in many applications.

产品特点 / Product characteristics

滤芯采用横向打折工艺，有效过滤面积大，压降低，流量大。
采用深层精细膜材，科学设计多层梯度孔径过滤结构，使得滤芯具有高纳污量的特点，从而延长了滤芯使用寿命，节省用户成本。
全PP材质使得滤芯具有良好的化学相容性，适合多种液体过滤。

New horizontal Pleated artwork, High filtration area, high flow rate.

With depth fine non-woven fabrics and scientific design, the filter has a good structure which has high dirt holding capacity, and result in long service life.

100% PP material makes the filter cartridge got excellent chemical compatibility. It is suitable for various liquid filtration.



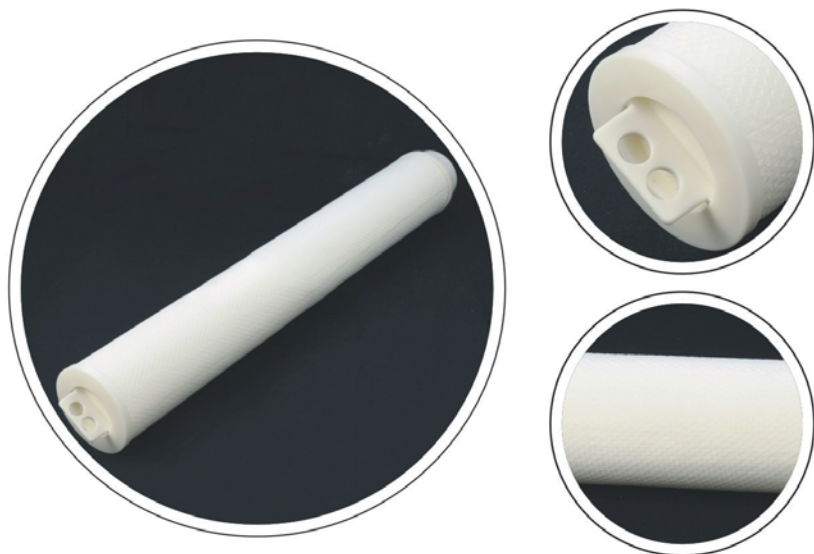
产品规格 / Product specification

| | |
|-----------------------------------|---|
| 产品尺寸 Dimension | [精度/Removal Rating]: 0.5um, 1um, 3um, 5um, 10um, 20um, 50um, 75um, 100um [长度/Length]: 20*(508mm), 30*(762mm), 40*(1016mm), 50*(1270mm), 60*(1524mm) [外径/OD]: Ø 152mm |
| 结构材料 Material of Constructions | [滤材/Media]: 聚丙烯/玻璃纤维/Polypropylene(PP)/Glass Fiber [导流层/Drain layer]: 美国无纺布/USA Non-Woven Fabric [端盖/End cap]: 聚丙烯/Polypropylene(PP) [垫片/密封圈/Gasket]: 硅橡胶, 乙丙橡胶, 丁腈橡胶, 氟橡胶/Silicone, EPDM, NBR, Viton [中心杆/Core]: 聚丙烯/Polypropylene(PP) |
| 技术性能 Performance | [最高操作温度/Max. Operating temperature]: 80°C [最大压差/Max. Operating DP]: 4.0Bar@21°C, 2.4Bar@80°C |

订单信息 / Order Information

| 大流量M4系列 Series Number | 精度 Removal Rating | 尺寸 Length | 中心杆 CORE | 滤材 MEDIA | 垫片 SEAL | 外径 OD |
|--------------------------|---|----------------|-------------|--------------------|----------------|----------|
| FWHFM4 | 0.5um=05 | 20*(508mm)=20 | 聚丙烯/PP=P | 聚丙烯/PP=P | 硅橡胶/SILICONE=S | 152mm |
| | 1um=1 | 30*(762mm)=30 | | 玻璃纤维/Glass Fiber=G | 乙丙橡胶/EPDM=E | |
| | 3um=3 | 40*(1016mm)=40 | | | 丁腈橡胶/NBR=N | |
| | 5um=5 | 50*(1270mm)=50 | | | 氟橡胶/VITON=V | |
| | 10um=10 | 60*(1524mm)=60 | | | | |
| | 20um=20 | | | | | |
| | 50um=50 | | | | | |
| | 75um=75 | | | | | |
| 100um=100 | | | | | | |
| 举例 For Example | FWHFM4-1-20-P-P-S FWHFM4-10-40-P-G-S | | | | | |

大流量滤芯PKSQ系列 / High Flow PKSQ Series



大流量滤芯PKSQ系列采用深层精细聚丙烯或玻璃纤维做为滤材，拥有6英寸/152mm的大直径，单向开口，有中心杆以及由外到内的液体流向，保证所有污染物颗粒被拦截在滤芯外部，超大流量的设计使得在相同流量应用场合滤芯和过滤器的使用量明显减少，大大节约了设备投入成本和人工成本。

High Flow PKSQ Series Filter Cartridges are made from depth fine PP or GF non-woven fabrics. The filter has a big diameter of 6 inch/152mm and with inner core, single open, the outside to inside flow pattern ensure that all the particles will be intercepted at the outside of the filter. The long service life and high flow rate result in low investment and less manpower in many applications.

产品特点 / Product characteristics

滤芯有效过滤面积大，压降低，流量大。

采用深层精细膜材，科学设计多层梯度孔径过滤结构，使得滤芯具有高纳污量的特点，从而延长了滤芯使用寿命，节省用户成本。

全PP材质使得滤芯具有良好的化学相容性，适合多种液体过滤。

High filtration area, high flow rate.

With depth fine non-woven fabrics and scientific design, the filter has a good structure which has high dirt holding capacity, and result in long service life.

100% PP material makes the filter cartridge got excellent chemical compatibility. It is suitable for various liquid filtration.



产品规格 / Product specification

| | |
|--------------------------------------|---|
| 产品尺寸 Dimension | [精度/Removal Rating]: 0.5um,1um,3um,5um,10um,20um,50um,75um,100um |
| | [长度/Length]: 20*(508mm), 30*(762mm), 40*(1016mm), 50*(1270mm), 60*(1524mm) [外径/OD]: Ø 152mm |
| 结构材料 Material of Constructions | [滤材/Media]: 聚丙烯/玻璃纤维/Polypropylene(PP)/Glass Fiber |
| | [导流层/Drain layer]: 国产无纺布/China Non-Woven Fabric |
| | [端盖/End cap]: 聚丙烯/Polypropylene(PP) |
| | [垫片/密封圈/Gasket]: 硅橡胶, 乙丙橡胶, 丁腈橡胶, 氟橡胶/Silicone, EPDM, NBR, Viton |
| 技术性能 Performance | [中心杆/Core]: 聚丙烯/Polypropylene(PP) |
| | [最高操作温度/Max. Operating temperature]: 80°C [最大压差/Max. Operating DP]: 4.0Bar@21°C, 2.4Bar@80°C |

订单信息 / Order Information

| 大流量PK2系列 Series Number | 精度 Removal Rating | 尺寸 Length | 中心杆 CORE | 滤材 MEDIA | 垫片 SEAL | 外径 OD |
|---------------------------|---|----------------|-------------|--------------------|----------------|----------|
| FWHFPKSQ | 0.5um=05 | 20*(508mm)=20 | 聚丙烯/PP=P | 聚丙烯/PP=P | 硅橡胶/SILICONE=S | 152mm |
| | 1um=1 | 30*(762mm)=30 | | 玻璃纤维/Glass Fiber=G | 乙丙橡胶/EPDM=E | |
| | 3um=3 | 40*(1016mm)=40 | | | 丁腈橡胶/NBR=N | |
| | 5um=5 | 50*(1270mm)=50 | | | 氟橡胶/VITON=V | |
| | 10um=10 | 60*(1524mm)=60 | | | | |
| | 20um=20 | | | | | |
| | 50um=50 | | | | | |
| | 75um=75 | | | | | |
| 100um=100 | | | | | | |
| 举例 For Example | FWHFPKSQ-1-20-P-P-S FWHFPKSQ-10-40-P-G-S | | | | | |

大流量滤芯LD系列 / High Flow LD Series



大流量滤芯LD系列采用深层精细聚丙烯或玻纤膜做为滤材，拥有6英寸/152mm的大直径，单向开口，并特别设计了由内到外的液体流向，保证所有污染物颗粒被拦截在滤芯内部。超大流量的设计使得在相同流量应用场合滤芯和过滤器的使用量明显减少，大大节约了设备投入成本和人工成本。

High Flow LD Series Filter Cartridges are made from depth fine PP or GF non-woven fabrics. The filter has a big diameter of 6 inch/152mm and no inner core, single open. The inside to outside flow pattern ensure that all the particles will be intercepted at the inside of the filter. The long service life and high flow rate result in low investment and less manpower in many applications.

产品特点 / Product characteristics

滤芯有效过滤面积大，压降低，流量大。

采用深层精细膜材，科学设计多层梯度孔径过滤结构，使得滤芯具有高纳污量的特点，从而延长了滤芯使用寿命，节省用户成本。

全PP材质使得滤芯具有良好的化学相容性，适合多种液体过滤。

High filtration area, high flow rate.

With depth fine non-woven fabrics and scientific design, the filter has a good structure which has high dirt holding capacity, and result in long service life.

100% PP material makes the filter cartridge got excellent chemical compatibility. It is suitable for various liquid filtration.



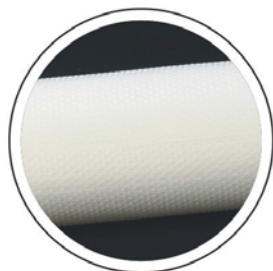
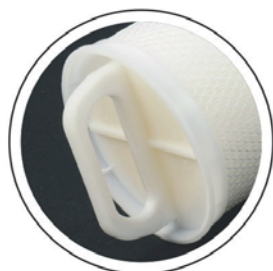
产品规格 / Product specification

| | |
|---|--|
| 产品尺寸 Dimension | [精度/Removal Rating]: 0.5um,1um,3um,5um,10um,20um,50um,75um,100um |
| | [长度/Length]: 610mm / 660mm |
| | [外径/OD]: Ø 152mm |
| 结构材料 Material of Constructions | [滤材/Media]: 聚丙烯/玻璃纤维 或者 熔喷PP材料/ Polypropylene(PP)/Glass Fiber or Melt Blown Material |
| | [导流层/Drain layer]: 国产无纺布/China Non-Woven Fabric |
| | [端盖/End cap]: 聚丙烯/Polypropylene(PP) |
| | [垫片/密封圈/Gasket]: 硅橡胶, 乙丙橡胶, 丁腈橡胶, 氟橡胶/Silicone, EPDM, NBR, Viton |
| 技术性能 Performance | [中心杆/Core]: 聚丙烯/Polypropylene(PP) |
| | [最高操作温度/Max. Operating temperature]: 80°C |
| | [最大压差/Max. Operating DP]: 4.0Bar@21°C, 2.4Bar@80°C |

订单信息 / Order Information

| 大流量LD系列 Series Number | 精度 Removal Rating | 尺寸 Length | 中心杆 CORE | 滤材 MEDIA | 垫片 SEAL | 外径 OD |
|--------------------------|----------------------|--------------|-------------|--------------------|----------------|----------|
| FWHFLD | 0.5um=05 | 610mm=610 | 聚丙烯/PP=P | 聚丙烯/PP=P | 硅橡胶/SILICONE=S | 152mm |
| | 1um=1 | 660mm=660 | | 玻璃纤维/Glass Fiber=G | 乙丙橡胶/EPDM=E | |
| | 3um=3 | | | | 丁腈橡胶/NBR=N | |
| | 5um=5 | | | | 氟橡胶/VITON=V | |
| | 10um=10 | | | | | |
| | 20um=20 | | | | | |
| | 50um=50 | | | | | |
| | 75um=75 | | | | | |
| 100um=100 | | | | | | |
| 举例 For Example | FWHFLD-1-610-P-P-S | | | | | |
| | FWHFLD-10-660-P-G-S | | | | | |

大流量滤芯FSFE系列 / High Flow FSFE Series



大流量滤芯FSFE系列采用深层精细聚丙烯或玻纤膜做为滤材，拥有6英寸/152mm的大直径，单向开口，有中心杆以及由外到内的液体流向，保证所有污染物颗粒被拦截在滤芯外部。超大流量的设计使得在相同流量应用场合滤芯和过滤器的使用量明显减少，大大节约了设备投入成本和人工成本。

High Flow FSFE Series Filter Cartridges are made from depth fine PP or GF non-woven fabrics. The filter has a big diameter of 6 inch/152mm and with inner core, single open, the outside to inside flow pattern ensure that all the particles will be intercepted at the outside of the filter. The long service life and high flow rate result in low investment and less manpower in many applications.

产品特点 / Product characteristics

滤芯有效过滤面积大，压降低，流量大。

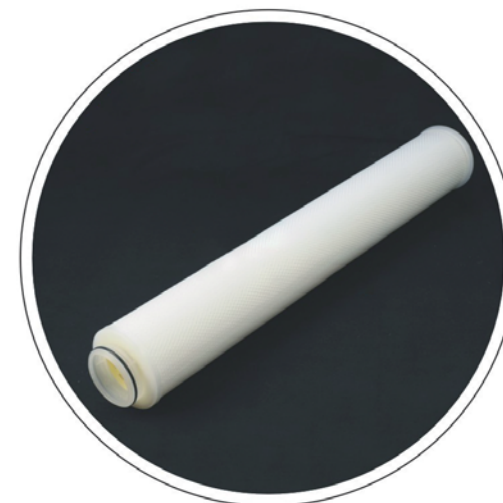
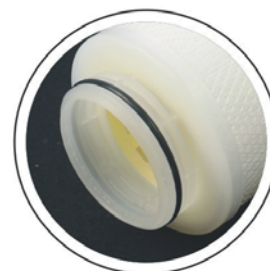
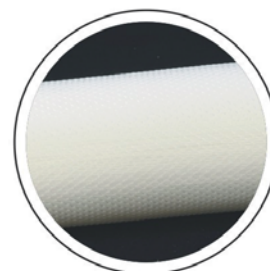
采用深层精细膜材，科学设计多层梯度孔径过滤结构，使得滤芯具有高纳污量的特点，从而延长了滤芯使用寿命，节省用户成本。

全PP材质使得滤芯具有良好的化学相容性，适合多种液体过滤。

High filtration area, high flow rate.

With depth fine non-woven fabrics and scientific design, the filter has a good structure which has high dirt holding capacity, and result in long service life.

100% PP material makes the filter cartridge got excellent chemical compatibility. It is suitable for various liquid filtration.



产品规格 / Product specification

| | |
|---|--|
| 产品尺寸 Dimension | [精度/Removal Rating]: 0.5um,1um,3um,5um,10um,20um,50um,75um,100um |
| | [长度/Length]: 20*(508mm), 30*(762mm), 40*(1016mm), 50*(1270mm), 60*(1524mm) |
| 结构材料 Material of Constructions | [外径/OD]: Ø 152mm |
| | [滤材/Media]: 聚丙烯/玻璃纤维/Polypropylene(PP)/Glass Fiber |
| | [导流层/Drain layer]: 国产无纺布/美国无纺布/China Non-Woven Fabric / USA Non-Woven Fabric |
| | [端盖/End cap]: 聚丙烯/Polypropylene(PP) |
| 技术性能 Performance | [垫片/密封圈/Gasket]: 硅橡胶, 乙丙橡胶, 丁腈橡胶, 氟橡胶/Silicone, EPDM, NBR, Viton |
| | [中心杆/Core]: 聚丙烯/Polypropylene(PP) |
| | [最高操作温度/Max. Operating temperature]: 80°C |
| | [最大压差/Max. Operating DP]: 4.0Bar@21°C, 2.4Bar@80°C |

订单信息 / Order Information

| 大流量FSFE系列 Series Number | 精度 Removal Rating | 尺寸 Length | 中心杆 CORE | 滤材 MEDIA | 垫片 SEAL | 外径 OD |
|----------------------------|----------------------|----------------|-------------|--------------------|----------------|----------|
| FWHFFSFE | 0.5um=05 | 20*(508mm)=20 | 聚丙烯/PP=P | 聚丙烯/PP=P | 硅橡胶/SILICONE=S | 152mm |
| | 1um=1 | 30*(762mm)=30 | | 玻璃纤维/Glass Fiber=G | 乙丙橡胶/EPDM=E | |
| | 3um=3 | 40*(1016mm)=40 | | | 丁腈橡胶/NBR=N | |
| | 5um=5 | 50*(1270mm)=50 | | | 氟橡胶/VITON=V | |
| | 10um=10 | 60*(1524mm)=60 | | | | |
| | 20um=20 | | | | | |
| | 50um=50 | | | | | |
| | 75um=75 | | | | | |
| 100um=100 | | | | | | |
| 举例 For Example | FWHFFSFE-1-20-P-P-S | | | | | |
| | FWHFFSFE-10-40-P-G-S | | | | | |



折叠滤芯系列 PLEATED MEMBRANE FILTER SERIES



折叠PP滤芯系列
Pleated Membrane PP Series



折叠尼龙滤芯系列
Pleated Membrane NL Series



折叠PTFE亲水滤芯系列
Pleated Membrane PTIL Series



折叠PTFE疏水滤芯系列
Pleated Membrane PTOB Series



折叠PES滤芯系列
Pleated Membrane PES Series

折叠PP滤芯系列 / Pleated Membrane PP Series



直径83mm



折叠PP滤芯系列由技术突破型亚微米级高性能聚丙烯纤维膜材料制成，孔隙分布均匀，经由科学结构设计使得滤芯具有高流量的特性，能够快速有效的帮助用户过滤液体中的颗粒杂质并优化经济成本。

Pleated Membrane PP Series Filter Cartridges is constructed of high performance polypropylene filter media that got technological breakthrough type sub-micro level. The pores of the material are uniformly distributed. The construction is designed scientifically which makes the filter cartridge got high flow rate. This allows users can filter the particles in liquid quickly and efficiently and save the cost.

产品特点 / Product characteristics

技术突破型亚微米级高性能聚丙烯纤维膜滤材使得滤芯过滤性能优异。
高性能滤材结合科学结构设计使得滤芯具有流速快，通量高的特点。
高性能滤材结合科学结构设计组合使得滤芯具有深层过滤，纳污量高的特点，使用寿命长。
高效率滤材结合科学结构设计使得滤芯具有绝对精度过滤效率的特点。
全PP材质使得滤芯具有良好的化学相容性，适合多种液体过滤。

High performance polypropylene filter media that got technological breakthrough type sub-micro level makes filter cartridge have excellent performance.

High performance media with scientifically design makes filter cartridge have fast and high flow rate.

High efficiency filter media combined with the characteristics of scientific structural design makes the filter has a high dirt holding capacity which result in a long service life.

High efficiency filter combined with the characteristics of scientific structural design makes the filter with absolute precision filtration efficiency

100% PP material makes the filter cartridge got excellent chemical compatibility. It is suitable for various liquid filtration.



直径130mm

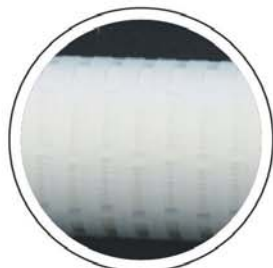
产品规格 / Product specification

| | |
|--------------------------------------|--|
| 产品尺寸 Dimension | [精度/Removal Rating]: 0.1um,0.22um,0.45um,1um,3um,5um,10um,20um,50um |
| | [长度/Length]: 5*(127mm),9.87*(250mm), 10*(254mm), 20*(508mm), 30*(762mm), 40*(1016mm) |
| 结构材料 Material of Constructions | [外径/OD]: Ø 60mm, 65mm, 68mm |
| | [滤材/Media]: 聚丙烯/Polypropylene(PP) |
| | [端盖/End cap]: 聚丙烯/Polypropylene(PP) |
| | [导流层/Drain layer]: 无纺布 (国产或美国)/Non-Woven Fabric (China or USA) |
| 技术性能 Performance | [垫片/密封圈/Seal/Gasket]: 硅橡胶, 乙丙橡胶, 丁晴橡胶, 氟橡胶/Silicone, EPDM, NBR, Viton |
| | [中心杆/Core]: 聚丙烯, 不锈钢/Polypropylene(PP), Stainless Steel(SUS) |
| | [最高操作温度/Max. Operating temperature]: 80°C |
| | [最大压差/Max. Operating DP]: 4.0Bar@21°C, 2.4Bar@80°C |

订单信息 / Order Information

| 折叠PP系列 Series Number | 精度 Removal Rating | 尺寸 Length | 中心杆 CORE | 端盖 END CAP | 垫片 SEAL | 外径 OD |
|-------------------------|----------------------|----------------|-------------|----------------|----------------|----------|
| FWPMP | 0.1um=01 | 5*(127mm)=5 | 聚丙烯/PP=P | 无/NON=N | 硅橡胶/SILICONE=S | 83mm |
| | 0.22um=022 | 10*(254mm)=10 | 不锈钢/SUS=S | 222平/CLOSE=S2C | 乙丙橡胶/EPDM=E | 130mm |
| | 0.45um=045 | 20*(508mm)=20 | | 222翅/FIN=S2F | 丁晴橡胶/NBR=N | |
| | 1um=1 | 30*(762mm)=30 | | 226平/CLOSE=S6C | 氟橡胶/VITON=V | |
| | 3um=3 | 40*(1016mm)=40 | | 226翅/FIN=S6F | | |
| 单列 For Example | FWPMP-1-10-P-DOE-S | | | | | |
| | FWPMP-1-20-P-S2C-S | | | | | |

折叠PP滤芯系列 / Pleated Membrane PP Series



折叠PP滤芯系列由技术突破型亚微米级高性能聚丙烯纤维膜材料制成，孔隙分布均匀，经由科学结构设计使得滤芯具有高流量的特性，能够快速有效的帮助用户过滤液体中的颗粒杂质并优化经济成本。

Pleated Membrane PP Series Filter Cartridges is constructed of high performance polypropylene filter media that got technological breakthrough type sub-micro level. The pores of the material are uniformly distributed. The construction is designed scientifically which makes the filter cartridge got high flow rate. This allows users can filter the particles in liquid quickly and efficiently and save the cost.

产品特点 / Product characteristics

技术突破型亚微米级高性能聚丙烯纤维膜材料使得滤芯过滤性能优异。
高性能滤芯结合科学结构设计使得滤芯具有流速快，通量高的特点。
高性能滤芯结合科学结构设计组合使得滤芯具有深层过滤，纳污量高的特点，使用寿命长。
高效率滤芯结合科学结构设计使得滤芯具有绝对精度过滤效率的特点。
全PP材质使得滤芯具有良好的化学相容性，适合多种液体过滤。

High performance polypropylene filter media that got technological breakthrough type sub-micro level makes filter cartridge have excellent performance.

High performance media with scientifically design makes filter cartridge have fast and high flow rate.

High efficiency filter media combined with the characteristics of scientific structural design makes the filter has a high dirt holding capacity which result in a long service life.

High efficiency filter combined with the characteristics of scientific structural design makes the filter with absolute precision filtration efficiency

100% PP material makes the filter cartridge got excellent chemical compatibility. It is suitable for various liquid filtration.



产品规格 / Product specification

| | |
|---------------|---|
| 产品尺寸 | [精度/Removal Rating]: 0.1um, 0.22um, 0.45um, 1um, 3um, 5um, 10um, 20um, 50um |
| Dimension | [长度/Length]: 5*(127mm), 9.87*(250mm), 10*(254mm), 20*(508mm), 30*(762mm), 40*(1016mm) |
| | [外径/OD]: Ø 60mm, 65mm, 68mm |
| 结构材料 | [滤材/Media]: 聚丙烯/Polypropylene(PP) |
| Material of | [端盖/End cap]: 聚丙烯/Polypropylene(PP) |
| Constructions | [导流层/Drain layer]: 无纺布 (国产或美国)/Non-Woven Fabric (China or USA) |
| | [垫片/密封圈/Seal/Gasket]: 硅橡胶, 乙丙橡胶, 丁腈橡胶, 氟橡胶/Silicone, EPDM, NBR, Viton |
| | [中心杆/Core]: 聚丙烯, 不锈钢/Polypropylene(PP), Stainless Steel(SUS) |
| 技术性能 | [最高操作温度/Max. Operating temperature]: 80°C |
| Performance | [最大压差/Max. Operating DP]: 4.0Bar@21°C, 2.4Bar@80°C |

订单信息 / Order Information

| 折叠PP系列 Series Number | 精度 Removal Rating | 尺寸 Length | 中心杆 CORE | 端盖 END CAP | 垫片 SEAL | 外径 OD |
|-------------------------|----------------------|----------------|-------------|----------------|----------------|----------|
| FWPMPP | 0.1um=01 | 5*(127mm)=5 | 聚丙烯/PP=P | 无/NON=N | 硅橡胶/SILICONE=S | 60mm |
| | 0.22um=022 | 10*(254mm)=10 | 不锈钢/SUS=S | 222平/CLOSE=S2C | 乙丙橡胶/EPDM=E | 65mm |
| | 0.45um=045 | 20*(508mm)=20 | | 222翅/FIN=S2F | 丁腈橡胶/NBR=N | |
| | 1um=1 | 30*(762mm)=30 | | 226平/CLOSE=S6C | 氟橡胶/VITON=V | |
| | 3um=3 | 40*(1016mm)=40 | | 226翅/FIN=S6F | | |
| 举例 For Example | FWPMPP-1-10-P-DOE-S | | | | | |
| | FWPMPP-1-20-P-S2C-S | | | | | |

折叠PP滤芯系列 / Pleated Membrane PP Series



折叠PP滤芯系列由技术突破型亚微米级高性能聚丙烯纤维膜材料制成，孔分布均匀，经由科学结构设计使得滤芯具有高流量的特性，能够快速有效的帮助用户过滤液体中的颗粒杂质并优化经济成本。

Pleated Membrane PP Series Filter Cartridges is constructed of high performance polypropylene filter media that got technological breakthrough type sub-micro level. The pores of the material are uniformly distributed. The construction is designed scientifically which makes the filter cartridge got high flow rate. This allows users can filter the particles in liquid quickly and efficiently and save the cost.

产品特点 / Product characteristics

技术突破型亚微米级高性能聚丙烯纤维膜滤材使得滤芯过滤性能优异。
高性能滤材结合科学结构设计使得滤芯具有流速快，通量高的特点。
高性能滤材结合科学结构设计组合使得滤芯具有深层过滤，纳污量高的特点，使用寿命长。
高效率滤材结合科学结构设计使得滤芯具有绝对精度过滤效率的特点。
全PP材质使得滤芯具有良好的化学相容性，适合多种液体过滤。

High performance polypropylene filter media that got technological breakthrough type sub-micro level makes filter cartridge have excellent performance.

High performance media with scientifically design makes filter cartridge have fast and high flow rate.

High efficiency filter media combined with the characteristics of scientific structural design makes the filter has a high dirt holding capacity which result in a long service life.

High efficiency filter combined with the characteristics of scientific structural design makes the filter with absolute precision filtration efficiency

100% PP material makes the filter cartridge got excellent chemical compatibility. It is suitable for various liquid filtration.



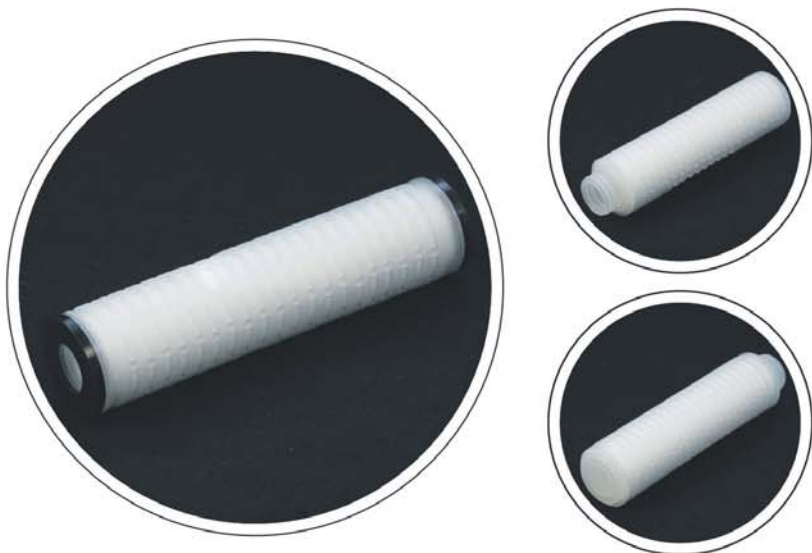
产品规格 / Product specification

| | |
|--------------------------------------|---|
| 产品尺寸 | [精度/Removal Rating]: 0.1um, 0.22um, 0.45um, 1um, 3um, 5um, 10um, 20um, 50um |
| Dimension | [长度/Length]: 5*(127mm), 9.87*(250mm), 10*(254mm), 20*(508mm), 30*(762mm), 40*(1016mm) |
| | [外径/OD]: Ø 60mm, 65mm, 68mm |
| 结构材料 Material of Constructions | [滤材/Media]: 聚丙烯/Polypropylene(PP) |
| | [端盖/End cap]: 聚丙烯/Polypropylene(PP) |
| | [导流层/Drain layer]: 无纺布 (国产或美国)/Non-Woven Fabric (China or USA) |
| | [垫片/密封圈/Seal/Gasket]: 硅橡胶, 乙丙橡胶, 丁腈橡胶, 氟橡胶/Silicone, EPDM, NBR, Viton |
| 技术性能 Performance | [中心杆/Core]: 聚丙烯, 不锈钢/Polypropylene(PP), Stainless Steel(SUS) |
| | [最高操作温度/Max. Operating temperature]: 80°C |
| | [最大压差/Max. Operating DP]: 4.0Bar@21°C, 2.4Bar@80°C |

订单信息 / Order Information

| 折叠PP系列 Series Number | 精度 Removal Rating | 尺寸 Length | 中心杆 CORE | 端盖 END CAP | 垫片 SEAL | 外径 OD |
|-------------------------|----------------------|----------------|-------------|----------------|----------------|----------|
| FWPMPP | 0.1um=01 | 5*(127mm)=5 | 聚丙烯/PP=P | 无/NON=N | 硅橡胶/SILICONE=S | 60mm |
| | 0.22um=022 | 10*(254mm)=10 | 不锈钢/SUS=S | 222平/CLOSE=S2C | 乙丙橡胶/EPDM=E | 65mm |
| | 0.45um=045 | 20*(508mm)=20 | | 222翅/FIN=S2F | 丁腈橡胶/NBR=N | 68mm |
| | 1um=1 | 30*(762mm)=30 | | 226平/CLOSE=S6C | 氟橡胶/VITON=V | 83mm |
| | 3um=3 | 40*(1016mm)=40 | | 226翅/FIN=S6F | | 130mm |
| 举例 For Example | FWPMPP-1-10-P-DOE-S | | | | | |
| | FWPMPP-1-20-P-S2C-S | | | | | |

折叠尼龙滤芯系列 / Pleated Membrane NL Series



折叠尼龙滤芯系列采用增强型尼龙膜及进口无纺布或丝网为支撑层生产，材料符合 FDA 要求。滤芯成型采用热熔焊接技术，不使用任何粘合剂。洁净环境生产，产品 100% 进行完整性测试并经高纯水冲洗。

Pleated Membrane NL Series Filter Cartridges is constructed of nylon6 media and nonwoven support materials. The adaptors are thermally welded without the use of glues or adhesive to prevent any possibility of pollution. The filters are produced in clean room and 100% integrity tested and flushed with ultrapure water.

产品特点 / Product characteristics

绝对精度的尼龙滤膜提供高过滤效率，保证去除液体中的杂质颗粒。

滤芯采用高纯度材料制成，确保低析出。采用热熔焊接技术，不添加任何粘合剂和活性剂，有效降低了滤芯自身的析出风险，保证使用安全。滤芯 100% 进行完整性检测。

The absolute nylon fiber membrane provides high filtration efficiency, ensure that impurities in the liquids are removed.

The filter cartridge is made of high purity material to ensure low precipitation. Thermal weld welding technology, do not add any adhesive and active agent, effectively reduce the risk of filter precipitation, ensure the safe usage.

100% integrity tested.



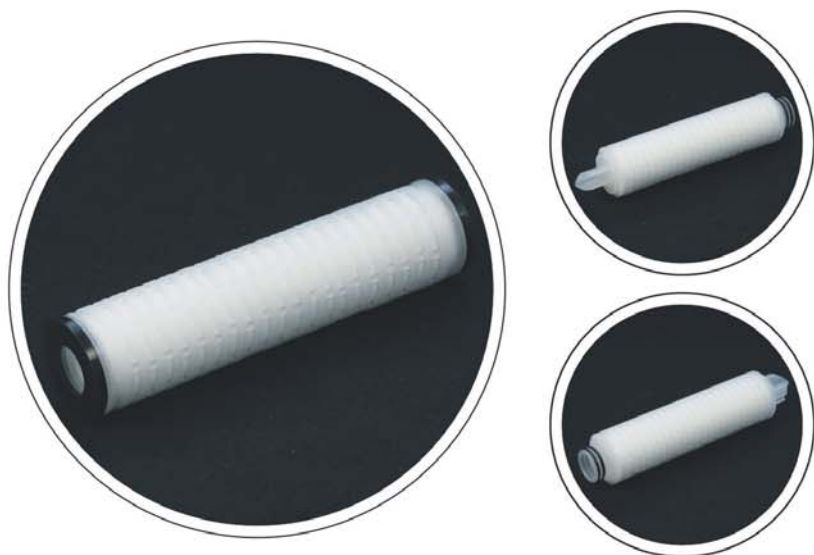
产品规格 / Product specification

| | |
|---------------|---|
| 产品尺寸 | [精度/Removal Rating]: 0.1um, 0.22um, 0.45um, 1um |
| Dimension | [长度/Length]: 5*(127mm), 9.87*(250mm), 10*(254mm), 20*(508mm), 30*(762mm), 40*(1016mm) |
| | [外径/OD]: Ø 60mm, 65mm, 68mm |
| 结构材料 | [滤材/Media]: 尼龙膜/Nylon Membrane |
| Material of | [端盖/End cap]: 聚丙烯/Polypropylene(PP) |
| Constructions | [导流层/Drain layer]: 美国杜邦进口无纺布/Non-Woven Fabric of DuPont, USA |
| | [垫片/密封圈/Seal/Gasket]: 硅橡胶, 乙丙橡胶, 丁腈橡胶, 氟橡胶/Silicone, EPDM, NBR, Viton |
| | [中心杆/Core]: 聚丙烯, 不锈钢/Polypropylene(PP), Stainless Steel(SUS) |
| 技术性能 | [最高操作温度/Max. Operating temperature]: 80°C |
| Performance | [最大压差/Max. Operating DP]: 4.0Bar@21°C, 2.4Bar@80°C |

订单信息 / Order Information

| 折叠尼龙系列 Series Number | 精度 Removal Rating | 尺寸 Length | 中心杆 CORE | 端盖 END CAP | 垫片 SEAL | 外径 OD |
|-------------------------|----------------------|----------------|-------------|----------------|----------------|----------|
| FWPMNL | 0.1um=01 | 5*(127mm)=5 | 聚丙烯/PP=P | DOE=DOE | 硅橡胶/SILICONE=S | 60mm |
| | 0.22um=022 | 10*(254mm)=10 | 不锈钢/SUS=S | 222平/CLOSE=S2C | 乙丙橡胶/EPDM=E | 65mm |
| | 0.45um=045 | 20*(508mm)=20 | | 222翅/FIN=S2F | 丁腈橡胶/NBR=N | 68mm |
| | 1um=1 | 30*(762mm)=30 | | 226平/CLOSE=S6C | 氟橡胶/VITON=V | 83mm |
| | | 40*(1016mm)=40 | | 226翅/FIN=S6F | | 130mm |
| 举例 For Example | FWPMNL-1-10-S-DOE-S | | | | | |
| | FWPMNL-1-20-S-S2C-S | | | | | |

折叠PTFE亲水滤芯系列 / Pleated Membrane PTIL Series



折叠PTFE亲水滤芯系列采用亲水聚四氟乙烯 (PTFE) 滤膜制成, 除了具有优异的化学相容性和耐腐蚀能力, 因其亲水滤芯的特性, 无需做预润湿处理即可过滤水性溶液, 极大的节约了操作时间成本。

Pleated Membrane PTIL Series Filter Cartridges is constructed of hydrophilic PTFE membrane which has excellent chemical compatibility and corrosion resistance. The membrane is hydrophilic which can filter the liquid directly without pre-wetting to save the operation time.

产品特点 / Product characteristics

PTFE 亲水滤膜无需预润湿, 节省操作时间。

PTFE 膜材化学相容性优异, 对各种料液有良好的耐受性, 可用于过滤多种强腐蚀性液体。

PTFE 膜材以绝对孔径精度提供高过滤效率, 保证去除杂质颗粒。

滤芯 100% 进行完整性检测。

The membrane is hydrophilic which can filter the liquid directly without pre-wetting to save the operation time.

PTFE membrane got excellent chemical compatibility. It has good tolerance to various chemical and can be used for filtering kinds of corrosive liquids.

PTFE membrane provide high filtration efficiency with absolute micron rating make sure to reduce the particals.

100% integrity tested.



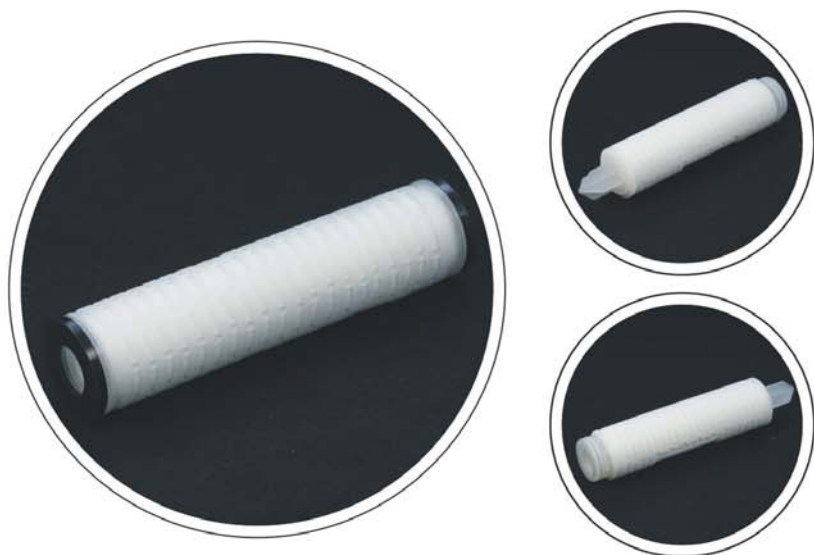
产品规格 / Product specification

| | |
|---|---|
| 产品尺寸 | [精度/Removal Rating]: 0.1um, 0.22um, 0.45um, 1um |
| Dimension | [长度/Length]: 5*(127mm), 9.87*(250mm), 10*(254mm), 20*(508mm), 30*(762mm), 40*(1016mm) |
| | [外径/OD]: Ø 60mm, 65mm, 68mm |
| 结构材料 Material of Constructions | [滤材/Media]: PTFE亲水膜/Hydrophilic PTFE Membrane |
| | [端盖/End cap]: 聚丙烯/Polypropylene(PP) |
| | [导流层/Drain layer]: 美国杜邦进口无纺布/Non-Woven Fabric of DuPont, USA |
| | [垫片/密封圈/Seal/Gasket]: 硅橡胶, 乙丙橡胶, 丁腈橡胶, 氟橡胶/Silicone, EPDM, NBR, Viton |
| 技术性能 Performance | [最高操作温度/Max. Operating temperature]: 80°C |
| | [最大压差/Max. Operating DP]: 4.0Bar@21°C, 2.4Bar@80°C |

订单信息 / Order Information

| 折叠PTFE亲水系列 Series Number | 精度 Removal Rating | 尺寸 Length | 中心杆 CORE | 端盖 END CAP | 垫片 SEAL | 外径 OD |
|-----------------------------|------------------------|----------------|-------------|----------------|----------------|----------|
| FWPMPTIL | 0.1um=01 | 5*(127mm)=5 | 聚丙烯/PP=P | DOE=DOE | 硅橡胶/SILICONE=S | 60mm |
| | 0.22um=022 | 10*(254mm)=10 | 不锈钢/SUS=S | 222平/CLOSE=S2C | 乙丙橡胶/EPDM=E | 65mm |
| | 0.45um=045 | 20*(508mm)=20 | | 222翅/FIN=S2F | 丁腈橡胶/NBR=N | 68mm |
| | 1um=1 | 30*(762mm)=30 | | 226平/CLOSE=S6C | 氟橡胶/VITON=V | 83mm |
| | | 40*(1016mm)=40 | | 226翅/FIN=S6F | | 130mm |
| 举例 For Example | FWPMPTIL-01-10-S-DOE-S | | | | | |
| | FWPMPTIL-01-20-S-S2C-S | | | | | |

折叠PTFE疏水滤芯系列 / Pleated Membrane PTOB Series



折叠PTFE疏水滤芯系列采用疏水聚四氟乙烯 (PTFE) 滤膜制成, 具有优异的化学相容性和耐腐蚀能力, 可用于强腐蚀性、强氧化性液体的过滤和气体过滤。

Pleated Membrane PTOB Series filter cartridge is constructed of hydrophobic PTFE membrane which has excellent chemical compatibility and corrosion resistance. This filter cartridge is suitable for the filtration of liquids and gases with strongly aggressive and oxidative.

产品特点 / Product characteristics

PTFE 膜材化学相容性优异, 对各种料液有良好的耐受性, 可用于过滤多种强腐蚀性液体和气体。
PTFE 膜材以绝对孔径精度提供高过滤效率, 保证去除杂质颗粒。
滤芯 100% 进行完整性检测。

PTFE membrane got excellent chemical compatibility. It has good tolerance to various chemical and can be used for filtering kinds of corrosive liquids and gases.

PTFE membrane provide high filtration efficiency with absolute micron rating make sure to reduce the particulates.

100% integrity tested.



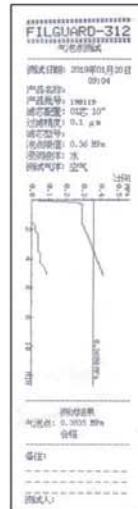
产品规格 / Product specification

| | |
|---------------|---|
| 产品尺寸 | [精度/Removal Rating]: 0.1um, 0.22um, 0.45um, 1um |
| Dimension | [长度/Length]: 5*(127mm), 9.87*(250mm), 10*(254mm), 20*(508mm), 30*(762mm), 40*(1016mm) |
| | [外径/OD]: Ø 60mm, 65mm, 68mm |
| 结构材料 | [滤材/Media]: PTFE亲水膜/Hydrophilic PTFE Membrane |
| Material of | [端盖/End cap]: 聚丙烯/Polypropylene(PP) |
| Constructions | [导流层/Drain layer]: 美国杜邦进口无纺布/Non-Woven Fabric of DuPont, USA |
| | [垫片/密封圈/Seal/Gasket]: 硅橡胶, 乙丙橡胶, 丁腈橡胶, 氟橡胶/Silicone, EPDM, NBR, Viton |
| | [中心杆/Core]: 聚丙烯, 不锈钢/Polypropylene(PP), Stainless Steel(SUS) |
| 技术性能 | [最高操作温度/Max. Operating temperature]: 80°C |
| Performance | [最大压差/Max. Operating DP]: 4.0Bar@21°C, 2.4Bar@80°C |

订单信息 / Order Information

| 折叠PTFE疏水系列 Series Number | 精度 Removal Rating | 尺寸 Length | 中心杆 CORE | 端盖 END CAP | 垫片 SEAL | 外径 OD |
|-----------------------------|------------------------|----------------|-------------|----------------|----------------|----------|
| FWPMPTOB | 0.1um=01 | 5*(127mm)=5 | 聚丙烯/PP=P | DOE=DOE | 硅橡胶/SILICONE=S | 60mm |
| | 0.22um=022 | 10*(254mm)=10 | 不锈钢/SUS=S | 222平/CLOSE=S2C | 乙丙橡胶/EPDM=E | 65mm |
| | 0.45um=045 | 20*(508mm)=20 | | 222翅/FIN=S2F | 丁腈橡胶/NBR=N | 68mm |
| | 1um=1 | 30*(762mm)=30 | | 226平/CLOSE=S6C | 氟橡胶/VITON=V | 83mm |
| | | 40*(1016mm)=40 | | 226翅/FIN=S6F | | 130mm |
| 举例 For Example | FWPMPTOB-01-10-S-DOE-S | | | | | |
| | FWPMPTOB-01-20-S-S2C-S | | | | | |

折叠PES滤芯系列 / Pleated Membrane PES Series



折叠PES滤芯系列由技术突破型亚微米级高性能聚丙烯纤维膜材料制成，孔隙分布均匀，经由科学结构设计使得滤芯具有高通量的特性，能够快速有效的帮助用户过滤液体中的颗粒杂质并优化经济成本。

Pleated Membrane PES Series filter cartridge is constructed of imported hydrophilic asymmetric PES membrane and imported non-woven fabrics and silk netting as support and then pleated. The cage, PP core and end cap are thermally welded with media without using any glue. All cartridges are manufactured and assembled in a clean room environment. 100% of the cartridges are integrity tested and flushed with EDI pure water. It is suitable for filtering weak acid/alkali based liquid and ultra pure water.

产品特点 / Product characteristics

非对称膜材结构。
 滤膜亲水性好，通量大，孔径分布均匀。
 非对称膜材结构增大了滤芯的纳污量，延长了滤芯的使用寿命。
 滤芯成型不使用任何粘合剂和表面活性剂，有效降低析出风险。
 滤芯 100% 进行完整性检测。

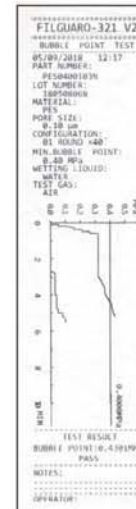
Asymmetric membrane structure.

High hydrophilic membrane, high flow rate, the pores of membrane uniformly distributed.

The membrane construction of asymmetric enlarge the dirty capability and extend the life time of the filter cartridge.

Do not use any glue and surface active agent during production process which reduces the risk of precipitation effectively.

100% integrity tested.



产品规格 / Product specification

| | |
|---|---|
| 产品尺寸 | [精度/Removal Rating]: 0.1um, 0.22um, 0.45um, 1um |
| Dimension | [长度/Length]: 10*(254mm), 20*(508mm), 30*(762mm), 40*(1016mm) |
| | [外径/OD]: Ø 60mm, 65mm, 68mm |
| | [滤材/Media]: 非对称 PES 膜 / Asymmetric PES Membrane |
| 结构材料 Material of Constructions | [端盖/End cap]: 聚丙烯 / Polypropylene (PP) |
| | [导流层/Drain layer]: 无纺布 (国产或美国) / Non-Woven Fabric (China or USA) |
| | [垫片/密封圈/Seal/Gasket]: 硅橡胶, 乙丙橡胶, 丁腈橡胶, 氟橡胶 / Silicone, EPDM, NBR, Viton |
| 技术性能 Performance | [中心杆/Core]: 聚丙烯, 不锈钢 / Polypropylene (PP), Stainless Steel (SUS) |
| | [最高操作温度/Max. Operating temperature]: 80°C |
| | [最大压差/Max. Operating DP]: 4.0Bar@21°C, 2.4Bar@80°C |

订单信息 / Order Information

| 折叠PES滤芯系列 Series Number | 精度 Removal Rating | 尺寸 Length | 中心杆 CORE | 端盖 END CAP | 垫片 SEAL | 外径 OD |
|----------------------------|----------------------|----------------|-------------|----------------|----------------|----------|
| FWMPES | 0.1um=01 | 10*(254mm)=10 | 聚丙烯/PP=P | DOE=DOE | 硅橡胶/SILICONE=S | 60mm |
| | 0.22um=022 | 20*(508mm)=20 | 不锈钢/SUS=S | 222平/CLOSE=S2C | 乙丙橡胶/EPDM=E | 65mm |
| | 0.45um=045 | 30*(762mm)=30 | | 222翅/FIN=S2F | 丁腈橡胶/NBR=N | 68mm |
| | 1um=1 | 40*(1016mm)=40 | | 226平/CLOSE=S6C | 氟橡胶/VITON=V | 83mm |
| | | | | 226翅/FIN=S6F | | 130mm |
| 举例 For Example | FWMPES-1-10-P-DOE-S | | | | | |
| | FWMPES-1-20-P-S2C-S | | | | | |



线绕滤芯系列 STRING WOUND FILTER SERIES



线绕PP滤芯系列
String Wound PP Series



线绕脱脂棉滤芯系列
String Wound AC Series



线绕玻纤滤芯系列
String Wound GF Series



电厂滤芯系列
Power Plant Series



电厂滤芯系列
Power Plant Series

线绕PP滤芯系列 / String Wound PP Series



线绕PP滤芯系列是深层线绕滤芯采用纺织纤维粗纱，按特定工艺，将纱线紧密地缠绕在多孔骨架上，形成外疏内密的蜂窝状结构，使得滤芯具有良好的深层过滤效果，能够有效地去除液体中的悬浮物、铁锈、颗粒等杂质。

String Wound PP Series Filter Cartridges is made from fine fiber yarn and comes out special patterns by certain technology .It has strong dirt holding capacity because of depth structure with loose outside part and close inner part. And as a result the filter has long service life. It is a good choice for prefiltration before RO in the making process of ultrapure water.

产品特点 / Product characteristics

深层过滤。
结构外疏内密，孔眼由大到小的深层滤材结构使得滤芯可以进行梯度过滤，有效截留更多杂质颗粒，增加了纳污量和使用寿命。
化学兼容性好。
多种过滤精度可选择。

Depth graded filtration.

Loose outside part and close inner part of the filter comes out depth structure for graded filtration Which can retain more particles and extend the service life.

Wide chemical compatibility.

Much micron ratings for choosing.

产品规格 / Product specification

| | |
|-----------------------------------|---|
| 精度/Removal Rating | 1um,5um,10um,20um,25um,50um,75um,100um,150um |
| 产品尺寸 Dimension | [长度/Length]: 5*(127mm),9.84*(250mm),10*(254mm),20*(508mm),30*(762mm),40*(1016mm),50*(1270mm),60*(1524mm),70*(1778mm) [外径/OD]: Ø 60mm, 62mm, 68mm, 114mm [内径/ID]: Ø 28mm, 30mm |
| 结构材料 Material of Constructions | [滤材/Media]: 聚丙烯/Polypropylene(PP) [端盖/End cap]: 聚丙烯/Polypropylene(PP) [垫片/密封圈/Seal/Gasket]: 硅橡胶, 乙丙橡胶, 丁腈橡胶, 氟橡胶/Silicone, EPDM, NBR, Viton [中心杆/Core]: 聚丙烯, 不锈钢/Polypropylene(PP), Stainless Steel(SUS) |
| 技术性能 Performance | [最高操作温度/Max. Operating temperature]: 60°C [最大压差/Max. Operating DP]: 2.0Bar@25°C |

订单信息 / Order Information

| 线绕PP系列 Series Number | 精度 Removal Rating | 尺寸 Length | 中心杆 CORE | 端盖 END CAP | 垫片 SEAL | 内径 ID | 外径 OD |
|-------------------------|---|------------------|-------------|----------------|----------------|----------|----------|
| FWSWPP | 1um=1 | 5*(127mm)=5 | 聚丙烯/PP=P | 无/NON=N | 硅橡胶/SILICONE=S | 28mm | 60mm |
| | 5um=5 | 9.84*(250mm)=984 | 不锈钢/SUS=S | DOE=DOE | 乙丙橡胶/EPDM=E | 30mm | 62mm |
| | 10um=10 | 10*(254mm)=10 | | 222平/CLOSE=S2C | 丁腈橡胶/NBR=N | | 68mm |
| | 20um=20 | 20*(508mm)=20 | | 222翅/FIN=S2F | 氟橡胶/VITON=V | | 114mm |
| | 25um=25 | 30*(762mm)=30 | | 226平/CLOSE=S6C | | | |
| | 50um=50 | 40*(1016mm)=40 | | 226翅/FIN=S6F | | | |
| | 75um=75 | 50*(1270mm)=50 | | | | | |
| | 100um=100 | 60*(1524mm)=60 | | | | | |
| 150um=150 | 70*(1778mm)=70 | | | | | | |
| 举例 For Example | FWSWPP-1-10-P-DOE-S-28/62 FWSWPP-1-20-P-S2C-S-28/114 | | | | | | |

线绕脱脂棉滤芯系列 / String Wound AC Series



线绕脱脂棉滤芯系列是深层线绕滤芯采用脱脂棉纱，按特定工艺，将纱线紧密地缠绕在多孔骨架上，形成外疏内密的蜂窝状结构，使得滤芯具有良好的深层过滤效果，能够有效地去除液体中的悬浮物、铁锈、颗粒等杂质。

String Wound AC Series Filter Cartridges is made from Absorbent Cotton yarn and comes out special patterns by certain technology .It has strong dirt holding capacity because of depth structure with loose outside part and close inner part. And as a result the filter has long service life. It is a good choice for prefiltration before RO in the making process of ultrapure water.

产品特点 / Product characteristics

深层过滤。
结构外疏内密，孔眼由大到小的深层滤材结构使得滤芯可以进行梯度过滤，有效截留更多杂质颗粒，增加了纳污量和使用寿命。
化学兼容性好。
多种过滤精度可选择。

Depth graded filtration.

Loose outside part and close inner part of the filter comes out depth structure for graded filtration Which can retain more particles and extend the service life.

Wide chemical compatibility.

Much micron ratings for choosing.



产品规格 / Product specification

| | |
|-----------------------------------|--|
| 精度/Removal Rating | 1um,5um,10um,20um,25um,50um,75um,100um,150um |
| 产品尺寸 Dimension | [长度/Length]: 5"(127mm),9.84"(250mm),10"(254mm),20"(508mm),30"(762mm),40"(1016mm),50"(1270mm),60"(1524mm),70"(1778mm) [外径/OD]: Ø 60mm, 62mm, 68mm, 114mm [内径/ID]: Ø 28mm, 30mm |
| 结构材料 Material of Constructions | [滤材/Media]: 脱脂棉/Absorbent Cotton(AC) [端盖/End cap]: 聚丙烯/Polypropylene(PP) [垫片/密封圈/Seal/Gasket]: 硅橡胶, 乙丙橡胶, 丁腈橡胶, 氟橡胶/Silicone, EPDM, NBR, Viton [中心杆/Core]: 聚丙烯, 不锈钢/Polypropylene(PP), Stainless Steel(SUS) |
| 技术性能 Performance | [最高操作温度/Max. Operating temperature]: 60°C-120°C [最大压差/Max. Operating DP]: 2.0Bar@25°C |

订单信息 / Order Information

| 线绕脱脂棉系列 Series Number | 精度 Removal Rating | 尺寸 Length | 中心杆 CORE | 端盖 END CAP | 垫片 SEAL | 内径 ID | 外径 OD |
|--------------------------|---|------------------|-------------|----------------|----------------|----------|----------|
| FWSWAC | 1um=1 | 5"(127mm)=5 | 聚丙烯/PP=P | 无/NON=N | 硅橡胶/SILICONE=S | 28mm | 60mm |
| | 5um=5 | 9.84"(250mm)=984 | 不锈钢/SUS=S | DOE=DOE | 乙丙橡胶/EPDM=E | 30mm | 62mm |
| | 10um=10 | 10"(254mm)=10 | | 222平/CLOSE=S2C | 丁腈橡胶/NBR=N | | 68mm |
| | 20um=20 | 20"(508mm)=20 | | 222翅/FIN=S2F | 氟橡胶/VITON=V | | 114mm |
| | 25um=25 | 30"(762mm)=30 | | 226平/CLOSE=S6C | | | |
| | 50um=50 | 40"(1016mm)=40 | | 226翅/FIN=S6F | | | |
| | 75um=75 | 50"(1270mm)=50 | | | | | |
| | 100um=100 | 60"(1524mm)=60 | | | | | |
| 150um=150 | 70"(1778mm)=70 | | | | | | |
| 举例 For Example | FWSWAC-1-10-P-DOE-S-28/62 FWSWAC-1-20-S-S2C-S-28/114 | | | | | | |

线绕玻纤滤芯系列 / String Wound GF Series



线绕玻纤滤芯系列是深层线绕滤芯采用玻璃纤维，按特定工艺，将纱线紧密地缠绕在多孔骨架上，形成外疏内密的蜂窝状结构，使得滤芯具有良好的深层过滤效果，能够有效地去除液体中的悬浮物、铁锈、颗粒等杂质。

String Wound GF Series Filter Cartridges is made from Glass Fiber and comes out special patterns by certain technology .It has strong dirt holding capacity because of depth structure with loose outside part and close inner part. And as a result the filter has long service life. It is a good choice for prefiltration before RO in the making process of ultrapure water.

产品特点 / Product characteristics

深层过滤。
结构外疏内密，孔眼由大到小的深层滤材结构使得滤芯可以进行梯度过滤，有效截留更多杂质颗粒，增加了纳污量和使用寿命。
化学兼容性好。
多种过滤精度可选择。

Depth graded filtration.

Loose outside part and close inner part of the filter comes out depth structure for graded filtration Which can retain more particles and extend the service life.

Wide chemical compatibility.

Much micron ratings for choosing.



产品规格 / Product specification

| | |
|---|---|
| 产品尺寸 | [精度/Removal Rating]: 1um,5um,10um,20um,25um,50um,75um,100um,150um |
| Dimension | [长度/Length]: 5*(127mm),9.84*(250mm), 10*(254mm), 20*(508mm), 30*(762mm), 40*(1016mm),50*(1270mm), 60*(1524mm) |
| | [外径/OD]: Ø 60mm, 62mm, 68mm, 114mm |
| 结构材料 Material of Constructions | [内径/ID]: Ø 28mm, 30mm |
| | [滤材/Media]: 玻璃纤维/Glass Fiber(GF) |
| | [端盖/End cap): 聚丙烯/Polypropylene(PP) |
| | [垫片/密封圈/Seal/Gasket]: 硅橡胶, 乙丙橡胶, 丁腈橡胶, 氟橡胶/Silicone, EPDM, NBR, Viton |
| 技术性能 Performance | [中心杆/Core): 聚丙烯, 不锈钢/Polypropylene(PP), Stainless Steel(SUS) |
| | [最高操作温度/Max. Operating temperature]: 200°C |
| | [最大压差/Max. Operating DP]: 2.0Bar@25°C |

订单信息 / Order Information

| 线绕玻纤系列 Series Number | 精度 Removal Rating | 尺寸 Length | 中心杆 CORE | 端盖 END CAP | 垫片 SEAL | 内径 ID | 外径 OD |
|-------------------------|----------------------------|------------------|-------------|----------------|----------------|----------|----------|
| FWSWGF | 1um=1 | 5*(127mm)=5 | 聚丙烯/PP=P | 无/NON=N | 硅橡胶/SILICONE=S | 28mm | 60mm |
| | 5um=5 | 9.84*(250mm)=984 | 不锈钢/SUS=S | DOE=DOE | 乙丙橡胶/EPDM=E | 30mm | 62mm |
| | 10um=10 | 10*(254mm)=10 | | 222平/CLOSE=S2C | 丁腈橡胶/NBR=N | | 68mm |
| | 20um=20 | 20*(508mm)=20 | | 222翅/FIN=S2F | 氟橡胶/VITON=V | | 114mm |
| | 25um=25 | 30*(762mm)=30 | | 226平/CLOSE=S6C | | | |
| | 50um=50 | 40*(1016mm)=40 | | 226翅/FIN=S6F | | | |
| | 75um=75 | 50*(1270mm)=50 | | | | | |
| | 100um=100 | 60*(1524mm)=60 | | | | | |
| 150um=150 | | | | | | | |
| 举例 For Example | FWSWGF-1-10-S-DOE-S-28/62 | | | | | | |
| | FWSWGF-1-20-S-S2C-S-28/114 | | | | | | |

电厂滤芯系列/Power Plant Series



电厂滤芯系列是深层线绕滤芯采用纺织纤维粗纱，按特定工艺，将纱线紧密地缠绕在多孔骨架上，形成外疏内密的蜂窝状结构，使得滤芯具有良好的深层过滤效果，能够有效地去除液体中的悬浮物、铁锈、颗粒等杂质。

Power Plant Series Filter Cartridges is made from fine fiber yarn and comes out special patterns by certain technology. It has strong dirt holding capacity because of depth structure with loose outside part and close inner part. And as a result the filter has long service life. It is a good choice for prefiltration before RO in the making process of ultrapure water.

产品特点 / Product characteristics

深层过滤。

结构外疏内密，孔眼由大到小的深层滤材结构使得滤芯可以进行梯度过滤，有效截留更多杂质颗粒，增加了纳污量和使用寿命。

化学兼容性好。

多种过滤精度可选择。

Depth graded filtration.

Loose outside part and close inner part of the filter comes out depth structure for graded filtration Which can retain more particles and extend the service life.

Wide chemical compatibility.

Much micron ratings for choosing.



产品规格 / Product specification

| | |
|---------------|---|
| 产品尺寸 | [精度/Removal Rating]: 1um,5um,10um,20um,25um,50um,75um,100um,150um |
| Dimension | [长度/Length]: 40*(1016mm),50*(1270mm),60*(1524mm),70*(1778mm) |
| | [外径/OD]: Ø 60mm, 62mm, 68mm, 114mm |
| | [内径/ID]: Ø 28mm, 30mm |
| 结构材料 | [滤材/Media]: 聚丙烯/Polypropylene(PP) |
| Material of | [端盖/End cap]: 聚丙烯/Polypropylene(PP) |
| Constructions | [垫片/密封圈/Seal/Gasket]: 硅橡胶, 乙丙橡胶, 丁腈橡胶, 氟橡胶/Silicone, EPDM, NBR, Viton |
| | [中心杆/Core]: 聚丙烯, 不锈钢/Polypropylene(PP), Stainless Steel(SUS) |
| 技术性能 | [最高操作温度/Max. Operating temperature]: 60°C |
| Performance | [最大压差/Max. Operating DP]: 2.0Bar@25°C |

订单信息 / Order Information

| 电厂滤芯系列 Series Number | 精度 Removal Rating | 尺寸 Length | 中心杆 CORE | 端盖 END CAP | 垫片 SEAL | 内径 ID | 外径 OD |
|-------------------------|----------------------------|----------------|-------------|----------------|----------------|----------|----------|
| FWSWPP | 1um=1 | 40*(1016mm)=40 | 聚丙烯/PP=P | 无/NON=N | 硅橡胶/SILICONE=S | 28mm | 60mm |
| | 5um=5 | 50*(1270mm)=50 | 不锈钢/SUS=S | DOE=DOE | 乙丙橡胶/EPDM=E | 30mm | 62mm |
| | 10um=10 | 60*(1524mm)=60 | | 222平/CLOSE=S2C | 丁腈橡胶/NBR=N | | 68mm |
| | 20um=20 | 70*(1778mm)=70 | | 222翅/FIN=S2F | 氟橡胶/VITON=V | | |
| | 25um=25 | | | 226平/CLOSE=S6C | | | |
| | 50um=50 | | | 226翅/FIN=S6F | | | |
| | 75um=75 | | | | | | |
| | 100um=100 | | | | | | |
| 150um=150 | | | | | | | |
| 举例 For Example | FWSWPP-1-10-P-DOE-S-28/62 | | | | | | |
| | FWSWPP-1-20-P-S2C-S-28/114 | | | | | | |

电厂滤芯系列/Power Plant Series



电厂滤芯系列由技术突破型亚微米级高性能聚丙烯纤维膜材料制成，孔隙分布均匀，经由科学结构设计使得滤芯具有高流量的特性，能够快速有效的帮助用户过滤料液中的颗粒杂质并优化经济成本。

Power Plant Series Filter Cartridges is constructed of high performance polypropylene filter media that got technological breakthrough type sub-micro level. The pores of the material are uniformly distributed. The construction is designed scientifically which makes the filter cartridge got high flow rate. This allows users can filter the particles in liquid quickly and efficiently and save the cost.

产品特点 / Product characteristics

技术突破型亚微米级高性能聚丙烯纤维膜滤芯使得滤芯过滤性能优异。
高性能滤芯结合科学结构设计使得滤芯具有流速快，通量高的特点。
高性能滤芯结合科学结构设计组合使得滤芯具有深层过滤，纳污量高的特点，使用寿命长。
高效率滤芯结合科学结构设计使得滤芯具有绝对精度过滤效率的特点。
全 PP 材质使得滤芯具有良好的化学相容性，适合多种液体过滤。

High performance polypropylene filter media that got technological breakthrough type sub-micro level makes filter cartridge have excellent performance.

High performance media with scientifically design makes filter cartridge have fast and high flow rate.

High efficiency filter media combined with the characteristics of scientific structural design makes the filter has a high dirt holding capacity which result in a long service life.

High efficiency filter combined with the characteristics of scientific structural design makes the filter with absolute precision filtration efficiency

100% PP material makes the filter cartridge got excellent chemical compatibility. It is suitable for various liquid filtration.



产品规格 / Product specification

| | |
|--------------------------------------|---|
| 产品尺寸 Dimension | [精度/Removal Rating]: 0.1um,0.22um,0.45um,1um,3um,5um,10um,20um,50um |
| | [长度/Length]: 60*(1524mm),70*(1778mm) |
| | [外径/OD]: Ø 60mm, 65mm, 68mm |
| 结构材料 Material of Constructions | [滤芯/Media]: 聚丙烯/Polypropylene(PP) |
| | [端盖/End cap]: 聚丙烯/Polypropylene(PP) |
| | [导流层/Drain layer]: 无纺布 (国产或美国)/Non-Woven Fabric (China or USA) |
| | [垫片/密封圈/Seal/Gasket]: 硅橡胶, 乙丙橡胶, 丁腈橡胶, 氟橡胶/Silicone, EPDM, NBR, Viton |
| 技术性能 Performance | [中心杆/Core]: 聚丙烯, 不锈钢/Polypropylene(PP), Stainless Steel(SUS) |
| | [最高操作温度/Max. Operating temperature]: 80°C |
| | [最大压差/Max. Operating DP]: 4.0Bar@21°C, 2.4Bar@80°C |

订单信息 / Order Information

| 电厂滤芯系列 Series Number | 精度 Removal Rating | 尺寸 Length | 中心杆 CORE | 端盖 END CAP | 垫片 SEAL | 外径 OD |
|-------------------------|----------------------|----------------|-------------|----------------|----------------|----------|
| FWPMPP | 0.1um=01 | 60*(1524mm)=60 | 聚丙烯/PP=P | 无/NON=N | 硅橡胶/SILICONE=S | 60mm |
| | 0.22um=022 | 70*(1778mm)=70 | 不锈钢/SUS=S | 222翅/FIN=S2C | 乙丙橡胶/EPDM=E | 65mm |
| | 0.45um=045 | | | 222翅/FIN=S2F | 丁腈橡胶/NBR=N | 68mm |
| | 1um=1 | | | 226平/CLOSE=S6C | 氟橡胶/VITON=V | |
| | 3um=3 | | | 226翅/FIN=S6F | | |
| 举例 For Example | FWPMPP-1-10-P-DOE-S | | | | | |
| | FWPMPP-1-20-P-S2C-S | | | | | |



熔喷滤芯系列 MELT BLOWN FILTER SERIES



熔喷光面滤芯系列
Melt Blown S Series



熔喷桔皮滤芯系列
Melt Blown O Series



熔喷压纹滤芯系列
Melt Blown E Series



熔喷麻点滤芯系列
Melt Blown D Series



熔喷切槽滤芯系列
Melt Blown G Series



熔喷毛面滤芯系列
Melt Blown P Series

熔喷光面滤芯系列 / Melt Blown S Series



熔喷光面滤芯系列是滤森熔喷系列产品中的标准款。滤芯由聚丙烯超细纤维热熔键结制成，不使用任何化学粘合剂。纤维在空间随机自粘形成三维微孔结构，布集表面、深层、粗滤于一体。由于纤维和密度在滤芯的直径方向形成高过滤精度及纳污能力，压差小，外疏内密渐变孔径的深层过滤结构，纳污力强，它能有效地除去液体中的悬浮物、微粒、铁锈等杂质，过滤效果高，寿命长。

Melt Blown S Series Filter Cartridges is FILTER WOODS's standard series of melt blown filter cartridges. It features fused and intertwined polypropylene fiber without the use of chemicals or glue. The fibers are bonded randomly to form 3-D microporosity in three zones. There are fine fibers for efficient particle removal and coarse fibers for strength of the structure. Changing fiber size and density creates the needed filtration rating. With lower density on the outer surface and tighter pores when moving to the inside, it can remove contaminant effectively, such as suspended substances, particulates and rust, providing efficient filtration and long service life.

产品特点 / Product characteristics

- 三层深度过滤结构提供高纳污量，长使用寿命。
- 直接原料热熔键结成型，不使用任何添加剂。
- 100%纯PP，化学兼容性好。
- FDA认证原材料，保证使用安全。
- 可加多种接头，安装适应性强。

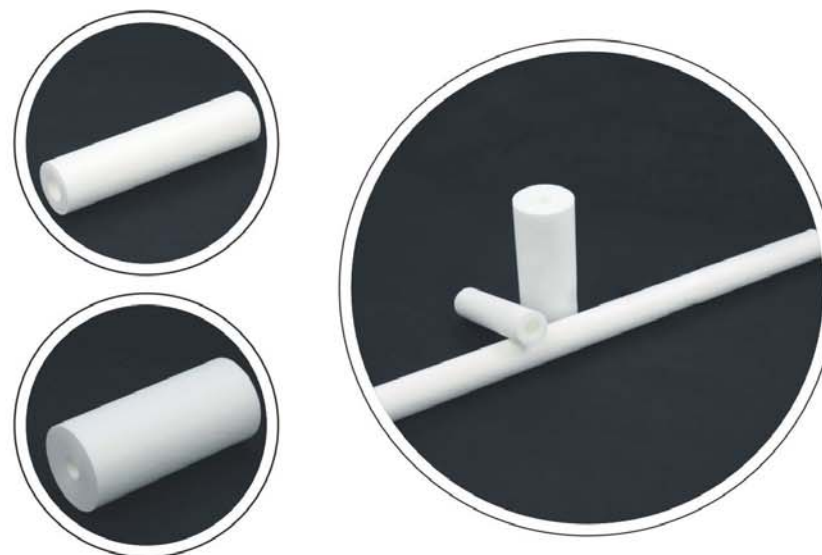
Three-zone structure cartridge offers high dirt holding capacity and longer service life.

Formed by thermal bond without using binders or adhesives.

100% pure polypropylene will not contaminate the treated liquid, Wide chemical compatibility.

FDA compliant material.

All common adaptors are available.



产品规格 / Product specification

| | |
|----------------------------------|---|
| 精度/Removal Rating | 1um,5um,10um,20um,25um,50um,75um,100um,150um |
| 产品尺寸 Dimension | [长度/Length]: 5"(127mm), 9.84"(250mm), 10"(254mm), 20"(508mm), 30"(762mm), 40"(1016mm), 50"(1270mm), 60"(1524mm) [外径/OD]: Ø 60mm, 62mm, 114mm [内径/ID]: Ø 28mm, 30mm, 32mm, 34mm, 36mm, 38mm, 110mm |
| 结构材料 Material of Construction | [滤材/Media]: 聚丙烯/Polypropylene(PP) [端盖/End cap]: 聚丙烯/Polypropylene(PP) [垫片/密封圈/Gasket]: 硅橡胶, 乙丙橡胶, 丁腈橡胶, 氟橡胶/Silicone, EPDM, NBR, Viton |
| 技术性能 Performance | [中心杆/Core]: 聚丙烯/Polypropylene(PP) [最高操作温度/Max. Operating temperature]: 65°C [最大压差/Max. Operating DP]: 2.0Bar@21°C |

订单信息 / Order Information

| 熔喷光面系列 Series Number | 精度 Removal Rating | 尺寸 Length | 中心杆 CORE | 端面 END CAP | 垫片 SEAL | 内径 ID | 外径 OD |
|-------------------------|---|------------------|-------------|----------------|----------------|----------|----------|
| FWMBS | 1um=1 | 5"(127mm)=5 | 无/NON=N | 无/NON=N | 硅橡胶/SILICONE=S | 28mm | 60mm |
| | 5um=5 | 9.84"(250mm)=984 | 聚丙烯/PP=P | DOE=DOE | 乙丙橡胶/EPDM=E | 30mm | 62mm |
| | 10um=10 | 10"(254mm)=10 | | 222平/CLOSE=S2C | 丁腈橡胶/NBR=N | 32mm | 114mm |
| | 20um=20 | 20"(508mm)=20 | | 222翅/FIN=S2F | 氟橡胶/VITON=V | 34mm | |
| | 25um=25 | 30"(762mm)=30 | | 226平/CLOSE=S6C | | 36mm | |
| | 50um=50 | 40"(1016mm)=40 | | 226翅/FIN=S6F | | 38mm | |
| | 75um=75 | 50"(1270mm)=50 | | | | 110mm | |
| | 100um=100 | 60"(1524mm)=60 | | | | | |
| | 150um=150 | | | | | | |
| 举例 For Example | FWMBS-1-10-N-DOE-S-28/62 FWMBS-1-20-N-S2C-S-28/114 | | | | | | |

熔喷桔皮滤芯系列 / Melt Blown O Series



熔喷桔皮滤芯系列采用最新工艺制作，使整支滤芯具有非常强的机械强度，抗压能力非常强，特别适合高粘度、高固含量的液体过滤；滤芯过滤精度高，颗粒拦截效果好。滤芯所用原材料已通过 NSF 认证。

Melt Blown O Series Filter Cartridges features fused and intertwined polypropylene fiber without the use of chemicals or glue. The fibers are bonded randomly to form 3-D microporosity in three zones. There are fine fibers for efficient particle removal and coarse fibers for strength of the structure. Changing fiber size and density creates the needed filtration rating. With lower density on the outer surface and tighter pores when moving to the inside, it can remove contaminant effectively, such as suspended substances, particulates and rust, providing efficient filtration and long service life. The orange-peel surface texture increases the filtration surface area and dirt holding capacity.

产品特点 / Product characteristics

- 三层深度过滤结构提供高纳污量，长使用寿命。
- 直接原料热熔缠结成型，不使用任何添加剂。
- 100%纯PP，化学兼容性好。
- 表面桔皮设计增大了滤芯过滤面积和强度。
- FDA认证原材料，保证使用安全。
- 可加多种接头，安装适应性强。

Three-zone structure cartridge offers high dirt holding capacity and longer service life.

Formed by thermal bond without using binders or adhesives.

100% pure polypropylene will not contaminate the treated liquid, wide chemical compatibility.

Orange Face design to extend the filtration surface area.

FDA compliant material.

All common adaptors are available.



产品规格 / Product specification

| | |
|----------------------------------|--|
| 精度/Removal Rating: | 1um,5um,10um,20um,25um,50um,75um,100um,150um |
| 产品尺寸/Length: | 5*(127mm),9.84*(250mm),10*(254mm),20*(508mm),30*(762mm),40*(1016mm),50*(1270mm),60*(1524mm) |
| Dimension | [外径/OD]: Ø 60mm, 62mm, 114mm [内径/ID]: Ø 28mm, 30mm, 32mm, 34mm, 36mm, 38mm |
| 结构材料/End cap: | 聚丙烯/Polypropylene(PP) |
| Material of Constructions | [端盖/End cap]: 聚丙烯/Polypropylene(PP) [垫片/密封圈/Gasket]: 硅橡胶, 乙丙橡胶, 丁腈橡胶, 氟橡胶/Silicone, EPDM, NBR, Viton [中心杆/Core]: 聚丙烯/Polypropylene(PP) |
| 技术性能/Max. Operating temperature: | 65°C |
| Performance | [最大压差/Max. Operating DP]: 2.0Bar@21°C |

订单信息 / Order Information

| 熔喷桔皮系列 Series Number | 精度 Removal Rating | 尺寸 Length | 中心杆 CORE | 端盖 END CAP | 垫片 SEAL | 内径 ID | 外径 OD |
|-------------------------|---|------------------|-------------|----------------|----------------|----------|----------|
| FWMBO | 1um=1 | 5*(127mm)=5 | 无/NON=N | 无/NON=N | 硅橡胶/SILICONE=S | 28mm | 60mm |
| | 5um=5 | 9.84*(250mm)=984 | 聚丙烯/PP=P | DOE=DOE | 乙丙橡胶/EPDM=E | 30mm | 62mm |
| | 10um=10 | 10*(254mm)=10 | | 222平/CLOSE=S2C | 丁腈橡胶/NBR=N | 32mm | 114mm |
| | 20um=20 | 20*(508mm)=20 | | 222翅/FIN=S2F | 氟橡胶/VITON=V | 34mm | |
| | 25um=25 | 30*(762mm)=30 | | 226平/CLOSE=S6C | | 36mm | |
| | 50um=50 | 40*(1016mm)=40 | | 226翅/FIN=S6F | | 38mm | |
| | 75um=75 | 50*(1270mm)=50 | | | | 110mm | |
| | 100um=100 | 60*(1524mm)=60 | | | | | |
| 150um=150 | | | | | | | |
| 单列 For Example | FWMBO-1-10-N-DOE-S-28/62 FWMBO-1-20-N-S2C-S-28/114 | | | | | | |

熔喷压纹滤芯系列 / Melt Blown E Series



熔喷压纹滤芯系列由聚丙烯超细纤维热熔缠结成型，纤维间形成致密三维空间且表面经特殊压纹处理，使滤芯内外致密并具有稳定的过滤精度，可有效的拦截杂质，拦截率高达99%，滤芯所用原材料已经通过了NSF认证。

Melt Blown E Series Filter Cartridges is fusing and intertwined of polypropylene resin without any chemical glues. The cartridges are glued at random to form 3D micro pore which will make the cartridge 3 layers with fine fibers in surface and coarse fibers and deep filtration. As the fiber and density form high filtration rating and pollutants holding capacity on diameter of filter cartridge, low pressure drop, gradual changing deep filtration structure with loose outside and close inner, strong pollutants holding capacity, it can remove contaminant effectively, such as suspended substance, particulate and rust, providing efficient filtration and long service life. Mini grooved surface increases the surface area and make the cartridge has a better appearance.

产品特点 / Product characteristics

三层深度过滤结构提供高纳污量，长使用寿命。
直接原料热熔缠结成型，不使用任何添加剂。
100%纯PP，化学兼容性好。
表面压纹设计增大了滤芯过滤面积和强度。
FDA认证原材料，保证使用安全。
可加多种接头，安装适应性强。

Three-zone structure cartridge offers high dirt holding capacity and longer service life.

Formed by thermal bond without using binders or adhesives.

100% pure polypropylene will not contaminate the treated liquid, wide chemical compatibility.

Embossed design to extend the filtration surface area.

FDA compliant material.

All common adaptors are available.



产品规格 / Product specification

| | |
|--------------------------------------|---|
| 产品尺寸 Dimension | [精度/Removal Rating]: 1um,5um,10um,20um,25um,50um,75um,100um,150um |
| | [长度/Length]: 5*(127mm),9.84*(250mm), 10*(254mm), 20*(508mm), 30*(762mm), 40*(1016mm),50*(1270mm), 60*(1524mm) |
| 结构材料 Material of Constructions | [外径/OD]: Ø 60mm, 62mm, 114mm |
| | [内径/ID]: Ø 28mm, 30mm, 32mm, 34mm, 36mm, 38mm |
| | [滤材/Media]: 聚丙烯/Polypropylene(PP) |
| 技术性能 Performance | [端盖/End cap]: 聚丙烯/Polypropylene(PP) |
| | [垫片/密封圈/Gasket]: 硅橡胶, 乙丙橡胶, 丁腈橡胶, 氟橡胶/Silicone, EPDM, NBR, Viton |
| | [中心杆/Core]: 聚丙烯/Polypropylene(PP) |
| | [最高操作温度/Max. Operating temperature]: 65°C |
| | [最大压差/Max. Operating DP]: 2.0Bar@21°C |

订单信息 / Order Information

| 熔喷压纹系列 Series Number | 精度 Removal Rating | 尺寸 Length | 中心杆 CORE | 端盖 END CAP | 垫片 SEAL | 内径 ID | 外径 OD |
|-------------------------|---------------------------|------------------|-------------|----------------|----------------|----------|----------|
| FWMBE | 1um=1 | 5*(127mm)=5 | 无/NON=N | 无/NON=N | 硅橡胶/SILICONE=S | 28mm | 60mm |
| | 5um=5 | 9.84*(250mm)=984 | 聚丙烯/PP=P | DOE=DOE | 乙丙橡胶/EPDM=E | 30mm | 62mm |
| | 10um=10 | 10*(254mm)=10 | | 222平/CLOSE=S2C | 丁腈橡胶/NBR=N | 32mm | 114mm |
| | 20um=20 | 20*(508mm)=20 | | 222翅/FIN=S2F | 氟橡胶/VITON=V | 34mm | |
| | 25um=25 | 30*(762mm)=30 | | 226平/CLOSE=S6C | | 36mm | |
| | 50um=50 | 40*(1016mm)=40 | | 226翅/FIN=S6F | | 38mm | |
| | 75um=75 | 50*(1270mm)=50 | | | | 110mm | |
| | 100um=100 | 60*(1524mm)=60 | | | | | |
| 150um=150 | | | | | | | |
| 举例 For Example | FWMBE-1-10-N-DOE-S-28/62 | | | | | | |
| | FWMBE-1-20-N-S2C-S-28/114 | | | | | | |

熔喷麻点滤芯系列 / Melt Blown D Series



熔喷麻点滤芯系列采用外疏内密结构设计，表面切槽，大大提高了滤芯的有效过滤面积，纳污能力强，其纳污量是普通熔喷滤芯的3倍以上；麻点设计还降低了初始压降，通量大，特别适合杂质含量高的液体过滤。滤芯所用原料通过 NSF 认证。

Melt Blown D Series Filter Cartridges is fusing and intertwined of polypropylene resin without any chemical glues. The cartridges are glued at random to form 3D micro pore which will make the cartridge 3 layers with fine fibers in surface and coarse fibers and deep filtration. As the fiber and density form high filtration rating and pollutants holding capacity on diameter of filter cartridge, low pressure drop, gradual changing deep filtration structure with loose outside and close inner, strong pollutants holding capacity, it can remove contaminant effectively, such as suspended substance, particulate and rust, providing efficient filtration and long service life. Deep grooved surface highly extend the filtration surface area, which makes the filter has a higher flow rate and lower pressure drop.

产品特点 / Product characteristics

- 三层深度过滤结构提供高纳污量，长使用寿命。
- 直接原料热熔缠结成型，不使用任何添加剂。
- 100%纯PP，化学兼容性好。
- 表面麻点设计增大了滤芯过滤面积和强度。
- FDA认证原材料，保证使用安全。
- 可加多种接头，安装适应性强。

Three-zone structure cartridge offers high dirt holding capacity and longer service life.

Formed by thermal bond without using binders or adhesives.

100% pure polypropylene will not contaminate the treated liquid, wide chemical compatibility.

Depth Dot design to extend the filtration surface area.

FDA compliant material.

All common adaptors are available.



产品规格 / Product specification

| | |
|----------------------------|--|
| 精度/Removal Rating | 1um, 5um, 10um, 20um, 25um, 50um, 75um, 100um, 150um |
| 产品尺寸/Dimension | [长度/Length]: 5*(127mm), 9.84*(250mm), 10*(254mm), 20*(508mm), 30*(762mm), 40*(1016mm), 50*(1270mm), 60*(1524mm) [外径/OD]: Ø 60mm, 62mm, 114mm [内径/ID]: Ø 28mm, 30mm, 32mm, 34mm, 36mm, 38mm |
| 结构材料/Construction Material | [滤材/Media]: 聚丙烯/Polypropylene(PP) [端盖/End cap]: 聚丙烯/Polypropylene(PP) [垫片/密封圈/Gasket]: 硅橡胶, 乙丙橡胶, 丁腈橡胶, 氟橡胶/Silicone, EPDM, NBR, Viton [中心杆/Core]: 聚丙烯/Polypropylene(PP) |
| 技术性能/Performance | [最高操作温度/Max. Operating temperature]: 65°C [最大压差/Max. Operating DP]: 2.0Bar@21°C |

订单信息 / Order Information

| 熔喷滤芯系列 Series Number | 精度 Removal Rating | 尺寸 Length | 中心杆 CORE | 端盖 END CAP | 垫片 SEAL | 内径 ID | 外径 OD |
|-------------------------|---|------------------|-------------|----------------|----------------|----------|----------|
| FWMBD | 1um=1 | 5*(127mm)=5 | 无/NON=N | 无/NON=N | 硅橡胶/SILICONE=S | 28mm | 60mm |
| | 5um=5 | 9.84*(250mm)=984 | 聚丙烯/PP=P | DOE=DOE | 乙丙橡胶/EPDM=E | 30mm | 62mm |
| | 10um=10 | 10*(254mm)=10 | | 222平/CLOSE=S2C | 丁腈橡胶/NBR=N | 32mm | 114mm |
| | 20um=20 | 20*(508mm)=20 | | 222翅/FIN=S2F | 氟橡胶/VITON=V | 34mm | |
| | 25um=25 | 30*(762mm)=30 | | 226平/CLOSE=S6C | | 36mm | |
| | 50um=50 | 40*(1016mm)=40 | | 226翅/FIN=S6F | | 38mm | |
| | 75um=75 | 50*(1270mm)=50 | | | | 110mm | |
| | 100um=100 | 60*(1524mm)=60 | | | | | |
| 150um=150 | | | | | | | |
| 单列 For Example | FWMBE-1-10-N-DOE-S-28/62 FWMBE-1-20-N-S2C-S-28/114 | | | | | | |

熔喷切槽滤芯系列 / Melt Blown G Series



熔喷切槽滤芯系列采用外疏内密结构设计，表面切槽，大大提高了滤芯的有效过滤面积，纳污能力强，其纳污量是普通熔喷滤芯的3倍以上；切槽设计还降低了初始压降，通量大，特别适合杂质含量高的液体过滤。滤芯所用原料通过 NSF 认证。

Melt Blown G Series Filter Cartridges is fusing and intertwined of polypropylene resin without any chemical glues. The cartridges are glued at random to form 3D micro pore which will make the cartridge 3 layers with fine fibers in surface and coarse fibers and deep filtration. As the fiber and density form high filtration rating and pollutants holding capacity on diameter of filter cartridge, low pressure drop, gradual changing deep filtration structure with loose outside and close inner, strong pollutants holding capacity, it can remove contaminant effectively, such as suspended substance, particulate and rust, providing efficient filtration and long service life. Deep grooved surface highly extend the filtration surface area, which makes the filter has a higher flow rate and lower pressure drop.

产品特点 / Product characteristics

- 三层深度过滤结构提供高纳污量，长使用寿命。
- 直接原料热熔维成型，不使用任何添加剂。
- 100%纯PP，化学兼容性好。
- 表面切槽设计增大了滤芯过滤面积和强度。
- FDA认证原材料，保证使用安全。
- 可加多种接头，安装适应性强。

Three-zone structure cartridge offers high dirt holding capacity and longer service life.

Formed by thermal bond without using binders or adhesives.

100% pure polypropylene will not contaminate the treated liquid, wide chemical compatibility.

Grooving design to extend the filtration surface area.

FDA compliant material.

All common adaptors are available.



产品规格 / Product specification

| | |
|-----------------------------------|---|
| 产品尺寸 Dimension | [精度/Removal Rating]: 1um,5um,10um,20um,25um,50um,75um,100um,150um |
| | [长度/Length]: 5*(127mm),9.84*(250mm), 10*(254mm), 20*(508mm), 30*(762mm), 40*(1016mm),50*(1270mm), 60*(1524mm) |
| 结构材料 Material of Constructions | [外径/OD]: Ø 60mm, 62mm, 114mm |
| | [内径/ID]: Ø 28mm, 30mm, 32mm, 34mm, 36mm, 38mm |
| 技术性能 Performance | [滤材/Media]: 聚丙烯/Polypropylene(PP) |
| | [端盖/End cap]: 聚丙烯/Polypropylene(PP) |
| | [垫片/密封圈/Gasket]: 硅橡胶, 乙丙橡胶, 丁腈橡胶, 氟橡胶/Silicone, EPDM, NBR, Viton |
| | [中心杆/Core]: 聚丙烯/Polypropylene(PP) |
| | [最高操作温度/Max. Operating temperature]: 65°C |
| | [最大压差/Max. Operating DP]: 2.0Bar@21°C |

订单信息 / Order Information

| 熔喷切槽系列 Series Number | 精度 Removal Rating | 尺寸 Length | 中心杆 CORE | 端盖 END CAP | 垫片 SEAL | 内径 ID | 外径 OD |
|-------------------------|---------------------------|------------------|-------------|----------------|----------------|----------|----------|
| FWMBG | 1um=1 | 5*(127mm)=5 | 无/NON=N | 无/NON=N | 硅橡胶/SILICONE=S | 28mm | 60mm |
| | 5um=5 | 9.84*(250mm)=984 | 聚丙烯/PP=P | DOE=DOE | 乙丙橡胶/EPDM=E | 30mm | 62mm |
| | 10um=10 | 10*(254mm)=10 | | 222平/CLOSE=S2C | 丁腈橡胶/NBR=N | 32mm | 114mm |
| | 20um=20 | 20*(508mm)=20 | | 222翅/FIN=S2F | 氟橡胶/VITON=V | 34mm | |
| | 25um=25 | 30*(762mm)=30 | | 226平/CLOSE=S6C | | 36mm | |
| | 50um=50 | 40*(1016mm)=40 | | 226翅/FIN=S6F | | 38mm | |
| | 75um=75 | 50*(1270mm)=50 | | | | 110mm | |
| | 100um=100 | 60*(1524mm)=60 | | | | | |
| 150um=150 | | | | | | | |
| 举例 For Example | FWMBG-1-10-N-DOE-S-28/62 | | | | | | |
| | FWMBG-1-20-N-S2C-S-28/114 | | | | | | |

熔喷毛面滤芯系列 / Melt Blown P Series



熔喷毛面滤芯内部由致密的聚丙烯超细纤维加工成由外到内的蜂窝结构，增大了表面拦截效果，避免了表面堵塞现象，大大的提高了滤芯的纳污能力和延长了使用寿命，并且不会出现掉毛现象，寿命是普通PP熔喷滤芯的4倍。

Melt Blown P Series is the internal processing of dense polypropylene ultrafine fibers into a honeycomb structure from the outside to the inside increases the surface interception effect, avoids surface blockage, greatly improves the fouling ability and extends the service life of the filter core, and does not appear. Hair loss phenomenon, The lifetime is 4 times that of the ordinary PP melting filter core.

产品特点 / Product characteristics

三层深度过滤结构提供高纳污量，长使用寿命。
直接原料热熔维结成型，不使用任何添加剂。
100%纯PP，化学兼容性好。
表面毛面设计增大了滤芯过滤面积和强度。
FDA认证原材料，保证使用安全。
可加多种接头，安装适应性强。

Three-zone structure cartridge offers high dirt holding capacity and longer service life.

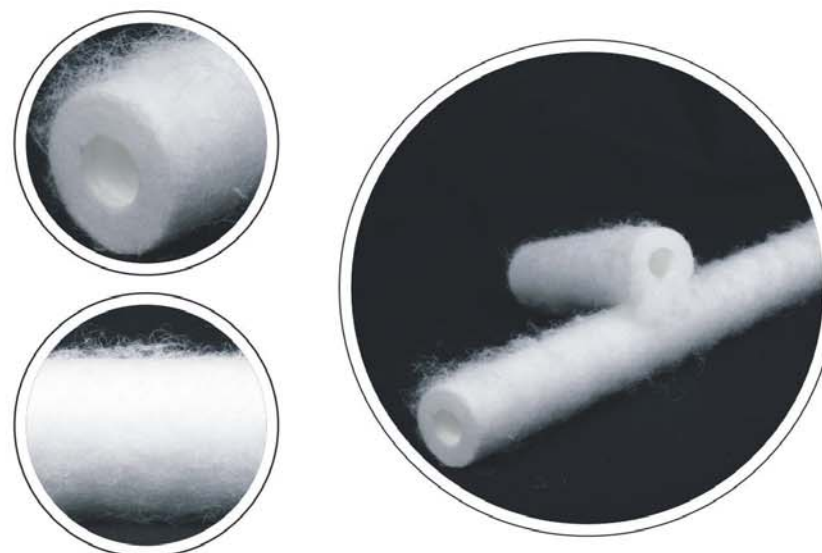
Formed by thermal bond without using binders or adhesives.

100% pure polypropylene will not contaminate the treated liquid, wide chemical compatibility.

Extend the filtration surface area.

FDA compliant material.

All common adaptors are available.

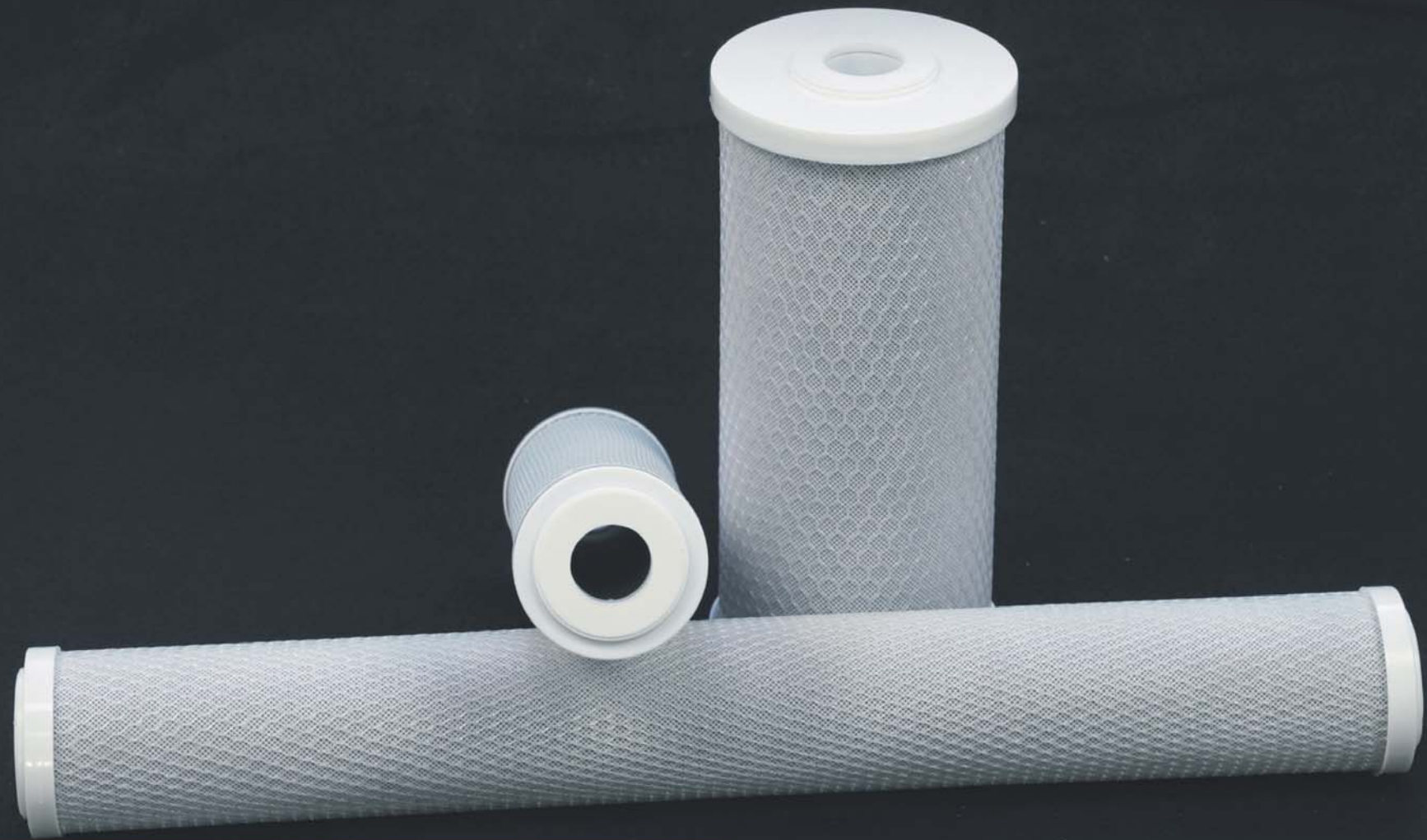


产品规格 / Product specification

| | |
|--------------------------------------|---|
| 精度/Removal Rating | 5um,10um |
| 产品尺寸/Length | 40*(1016mm) |
| Dimension | 外径/OD: Ø 62mm |
| | 内径/ID: Ø 28mm |
| 结构材料 Material of Constructions | 滤材/Media: 聚丙烯/Polypropylene(PP) |
| | 端盖/End cap: 聚丙烯/Polypropylene(PP) |
| | 中心杆/Core: 聚丙烯/Polypropylene(PP) |
| 技术性能 Performance | 最高操作温度/Max. Operating temperature: 65°C |
| | 最大压差/Max. Operating DP: 2.0Bar@21°C |

订单信息 / Order Information

| 熔喷毛面系列 Series Number | 精度 Removal Rating | 尺寸 Length | 中心杆 CORE | 端盖 END CAP | 垫片 SEAL | 内径 ID | 外径 OD |
|-------------------------|-------------------------|----------------|-------------|---------------|------------|----------|----------|
| FWMBP | 5um=5 | 40*(1016mm)=40 | 无/NON=N | 无/NON=N | 无/NON=N | 28mm | 62mm |
| | 10um=10 | | | | | | |
| | | | | | | | |
| | | | | | | | |
| | | | | | | | |
| | | | | | | | |
| | | | | | | | |
| 举例 For Example | FWMBP-5-40-N-N-N-28/62 | | | | | | |
| | FWMBP-10-40-N-N-N-28/62 | | | | | | |



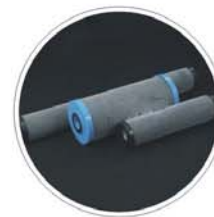
活性炭系列 CARBON FILTER SERIES



活性炭CTO滤芯系列
Carbon CTO Series

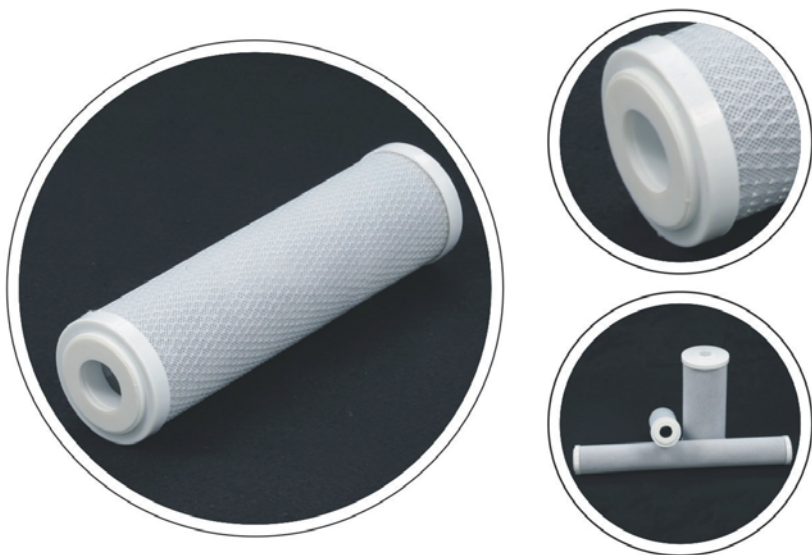


活性炭UDF滤芯系列
Carbon UDF Series



活性炭CIC滤芯系列
Carbon CIC Series

活性炭CTO滤芯系列 / Carbon CTO Series



活性炭CTO滤芯系列采用高效活性炭细颗粒加食品级胶粉连续挤压成型。该产品不仅具有颗粒活性炭优良的吸附性能，而且还可以避免散状活性炭释放碳粉的缺点，可以有效去除液体或气体中的余氯、异味及有机物。

Carbon CTO Activated Carbon Filter Cartridge are formed using extruding carbon fines and food-grade binders. This makes it FDA approved for the Food/Beverage industry. It also ensures that no bad taste is left behind. This filter is also great for filtering organic matter effectively.

产品特点 / Product characteristics

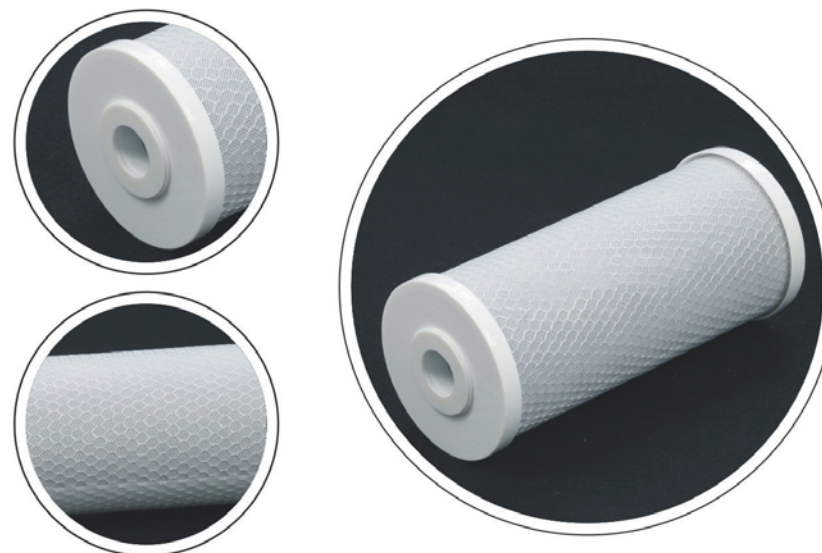
吸附性能高，
有效去除余氯、异味、有机物。
压差低，水流稳定。
不释放碳粉。

Good adsorption capacity.

Remove efficiently the chlorine, peculiar smell, organics.

Low pressure drop, steady flow.

No carbon fine releasing.



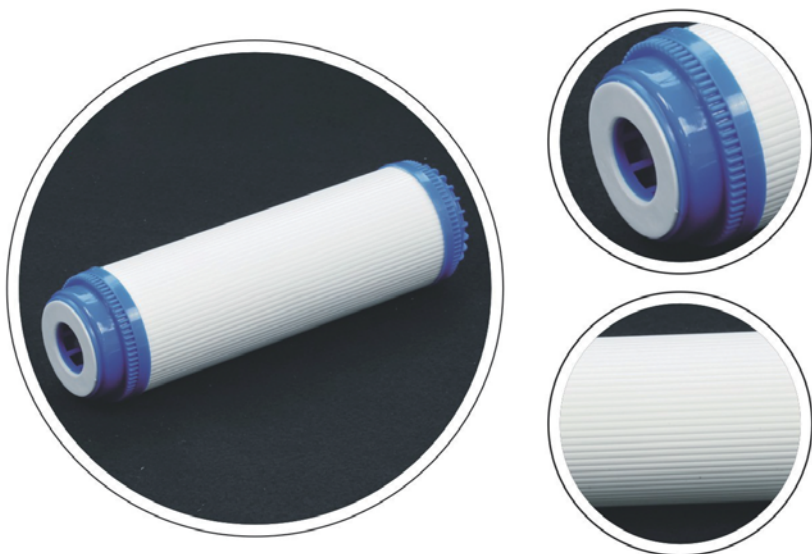
产品规格 / Product specification

| | |
|---|--|
| 产品尺寸 | [精度/Removal Rating]: 5um, 10um |
| Dimension | [长度/Length]: 9.84"(250mm), 10"(254mm), 19.68"(500mm), 20"(508mm), 29.52"(750mm), 30"(762mm), 39.36"(1000mm), 40"(1016mm) |
| | [外径/OD]: Ø 68mm, 112mm |
| 结构材料 Material of Constructions | [内径/ID]: Ø 28mm |
| | [滤材/Media]: 煤质碳、椰壳碳/acid washed bituminous GAC, water washed coconut shell GAC |
| | [端盖/End cap]: 聚丙烯/Polypropylene(PP) |
| 技术性能 Performance | [垫片/密封圈/Seal/Gasket]: 硅橡胶、乙丙橡胶、丁腈橡胶/Silicone, EPDM, NBR |
| | [网格/Core]: 聚乙烯/Polyethylene(PE) |
| 技术性能 Performance | [最高操作温度/Max. Operating temperature]: 52°C |
| | [最大压差/Max. Operating DP]: 7Bar, 20°C |
| | [最大操作压力/Max. Operating Pressure]: 10Bar |

订单信息 / Order Information

| 活性炭CTO系列 Series Number | 精度 Removal Rating | 尺寸 Length | 滤材 MEDIA | 垫片 SEAL/GASKET | 外径 OD |
|---------------------------|----------------------|-------------------|----------------------|-------------------|----------|
| FWCTO | 5um=5 | 9.84"(250mm)=984 | 煤质碳/Coal Carbon=CC | 硅橡胶/SILICONE=S | 68mm |
| | 10um=10 | 10"(254mm)=10 | 椰壳碳/Coconut shell=CS | 乙丙橡胶/EPDM=E | 112mm |
| | | 19.68"(500mm)=19 | | 丁腈橡胶/NBR=N | |
| | | 20"(508mm)=20 | | | |
| | | 29.52"(750mm)=29 | | | |
| | | 30"(762mm)=30 | | | |
| | | 39.36"(1000mm)=39 | | | |
| | 40"(1016mm)=40 | | | | |
| 举例 For Example | FWCTO-5-10-CC-S-68 | | | | |
| | FWCTO-10-20-CS-S-112 | | | | |

活性炭UDF滤芯系列 / Carbon UDF Series



活性炭UDF滤芯系列采用高效活性炭细颗粒加食品级胶粉连续挤压成型。该产品不仅具有颗粒活性炭优良的吸附性能，而且还可以避免散状活性炭释放碳粉的缺点，可以有效去除液体或气体中的余氯、异味及有机物。

Carbon UDF Activated Carbon Filter Cartridge are formed using extruding carbon fines and food-grade binders. This makes it FDA approved for the Food/Beverage industry. It also ensures that no bad taste is left behind. This filter is also great for filtering organic matter effectively.

产品特点 / Product characteristics

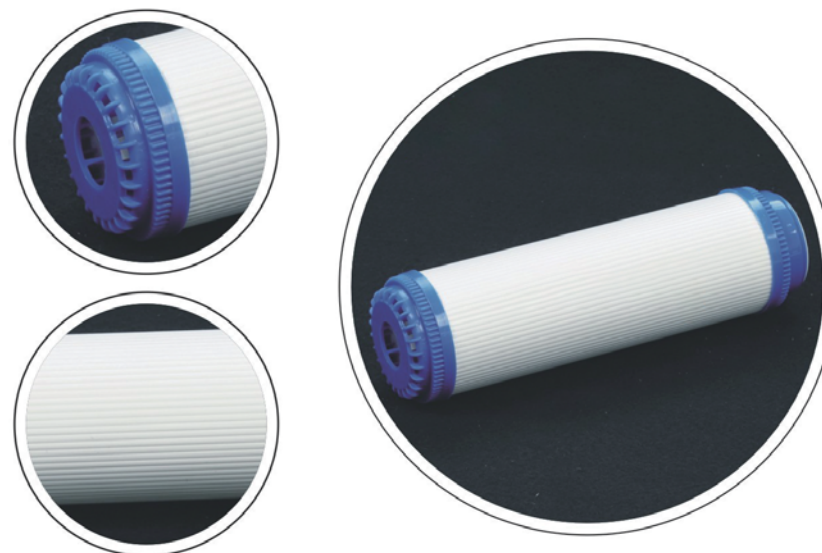
吸附性能高。
有效去除余氯、异味、有机物。
压差低，水流稳定。
不释放碳粉。

Good adsorption capacity.

Remove efficiently the chlorine, peculiar smell, organics.

Low pressure drop, steady flow.

No carbon fine releasing.



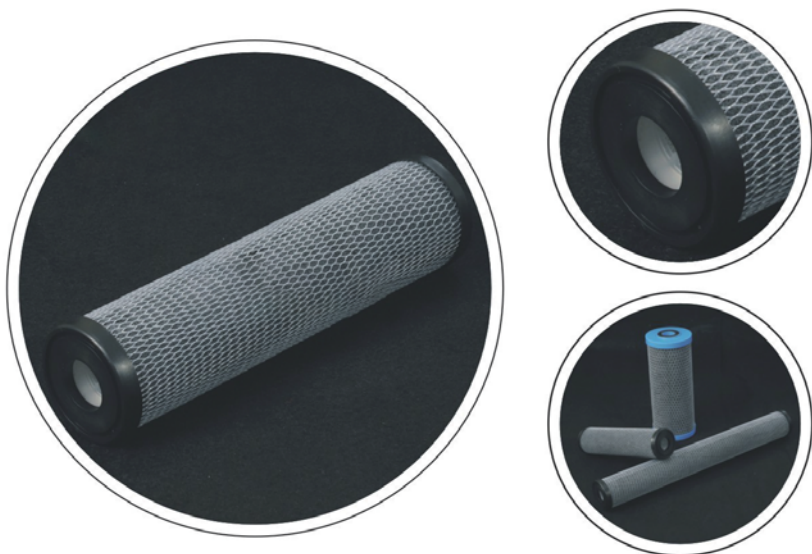
产品规格 / Product specification

| | |
|---------------|--|
| 产品尺寸 | [精度/Removal Rating]: 5um,10um |
| Dimension | [长度/Length]: 9.84"(250mm), 10"(254mm), 19.68"(500mm), 20"(508mm), 29.52"(750mm), 30"(762mm), 39.36"(1000mm), 40"(1016mm) |
| | [外径/OD]: Ø 70mm, 114mm |
| | [内径/ID]: Ø 28mm |
| 结构材料 | [滤材/Media]: 煤质碳、椰壳碳/acid washed bituminous GAC, water washed coconut shell GAC |
| Material of | [端盖/End cap]: 聚丙烯/Polypropylene(PP) |
| Constructions | [垫片/密封圈/Seal/Gasket]: 硅橡胶, 乙丙橡胶, 丁腈橡胶/Silicone, EPDM, NBR |
| | [网核/Core]: 聚乙烯/Polyethylene(PE) |
| 技术性能 | [最高操作温度/Max. Operating temperature]: 52°C |
| Performance | [最大压差/Max. Operating DP]: 7Bar, 20°C |
| | [最大操作压力/Max. Operating Pressure]: 10Bar |

订单信息 / Order Information

| 活性炭UDF系列 Series Number | 精度 Removal Rating | 尺寸 Length | 滤材 MEDIA | 垫片 SEAL/GASKET | 外径 OD |
|---------------------------|----------------------|----------------------|----------------------|-------------------|----------|
| FWUDF | 5um=5 | 9.84"(250mm)=984 | 煤质碳/Coal Carbon=CC | 硅橡胶/SILICONE=S | 70mm |
| | 10um=10 | 10"(254mm)=10 | 椰壳碳/Coconut shell=CS | 乙丙橡胶/EPDM=E | 114mm |
| | | 19.68"(500mm)=19 | | 丁腈橡胶/NBR=N | |
| | | 20"(508mm)=20 | | | |
| | | 29.52"(750mm)=29 | | | |
| | | 30"(762mm)=30 | | | |
| | | 39.36"(1000mm)=39 | | | |
| | | 40"(1016mm)=40 | | | |
| 举例 For Example | | FWUDF-S-10-CC-S-70 | | | |
| | | FWUDF-10-20-CS-S-114 | | | |

活性炭CIC滤芯系列 / Carbon CIC Series



活性炭纤维滤芯是由纤维素及活性炭粉末构成的复合深度过滤，结合活性炭过滤和吸附的双重功能的滤芯材质结构，滤芯的中柱外层是以精密的纤维滤材包覆内衬，再辅以活性炭纤维布环绕成形；液体流经滤材时，外层的深度纤维滤材结构能阻拦污染颗粒，滤布中的活性炭可以去除滤液中的异味、臭气、沉淀物、色素、挥发性有机物（VOC）以及有机化学物质；滤材最内层的纤维滤材，能防止碳末颗粒和细小的污染物流出，能提供滤液最终的品质保证与完整的过滤处理。

Carbon Impregnated Cellulose (CIC) Filter Cartridges combine the performance of depth filtration with the absorption of activated carbon fine. The outside deep filter media can remove particles while the activated carbon held within the filter cloth can absorb the smell, odor, sediment, pigment, VOC, and organic chemicals. The inside fiber filter prevents carbon particles and fine pollutants from passing through, thus increasing an efficient quality and integrated filtration.

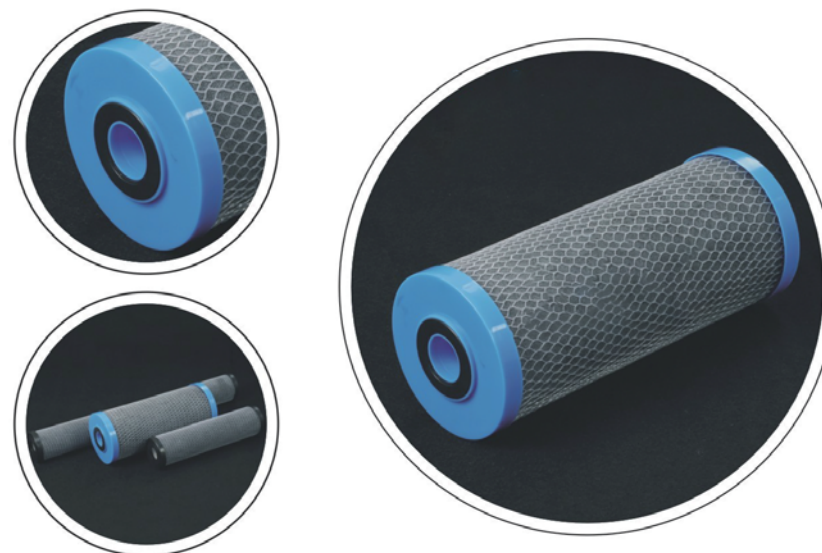
产品特点 / Product characteristics

5 / 10 微米的相对过滤精度。
纳污量大。
过滤吸附一体化。

Nominal 5 / 10 micron removal rating.

Excellent dirt-holding capacity.

Filtration and adsorption finished in one time process.

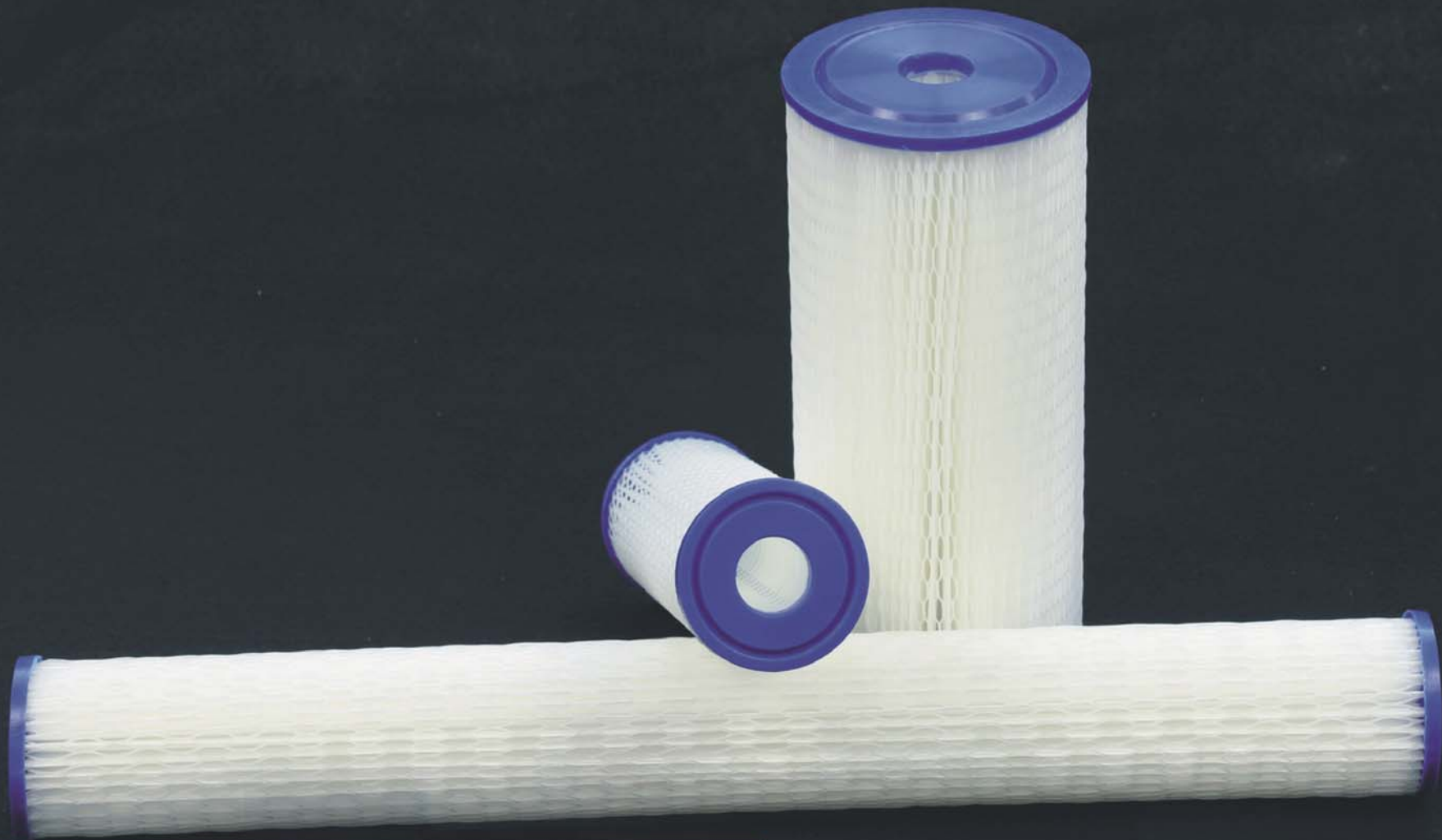


产品规格 / Product specification

| | |
|--------------------|---|
| 精度/Removal Rating] | 5um,10um |
| 产品尺寸 | [长度/Length]: 9.84*(250mm), 19.68*(508mm), 29.52*(750mm), 39.36*(1000mm) |
| Dimension | [外径/OD]: Ø 65mm, 112mm |
| | [内径/ID]: Ø 30mm |
| 结构材料 | [滤材/Media]: 活性炭纤维/Carbon Impregnated Cellulose |
| | [端盖/End cap]: 聚丙烯/Polypropylene(PP) |
| Constructions | [垫片/密封圈/Seal/Gasket]: 聚丙烯/Polypropylene(PP) |
| | [网格/Core]: 聚乙烯/Polyethylene(PE) |
| 技术性能 | [最高操作温度/Max. Operating temperature]: 52°C |

订单信息 / Order Information

| 活性炭纤维系列 Series Number | 精度 Removal Rating | 尺寸 Length | 外径 OD |
|--------------------------|----------------------|-------------------|----------|
| FWCIC | 5um=5 | 9.84*(250mm)=984 | 65mm |
| | 10um=10 | 19.68*(500mm)=19 | 112mm |
| | | 29.52*(750mm)=29 | |
| | | 39.36*(1000mm)=39 | |
| 举例 For Example | FWCIC-5-19-65 | | |
| | FWCIC-10-29-65 | | |



泳池滤芯系列
PLEATED-SPW FILTER SERIES



多折简易无网系列
Pleated-SPW Series



多折简易有网系列
Pleated-SPN Series

泳池滤芯无网系列 / Pleated-SPW Series



泳池滤芯无网系列过滤介质采用聚酯纤维布折叠制成,具有很好的力学性能和日光性,耐高温性能,在强酸中强度不受影响,在热碱中强度会受到影响。由于采用聚酯纤维布制成,拉力强度高。过滤介质、中心杆、端盖作为一整体部分胶合在一起,确保端盖封闭性更好,由于它的折叠设计,提供了更大的过滤面积,延长过滤的寿命,减少滤芯更新次数,降低过滤费用,从工业价值观点考虑是一种经济型过滤产品。

Pleated-SPW Filter Cartridges are washable, reusable, and durable, because of this the cartridge has an extended life span and is more economical. It also has an increased dirt holding capacity so cleaning is required less often.

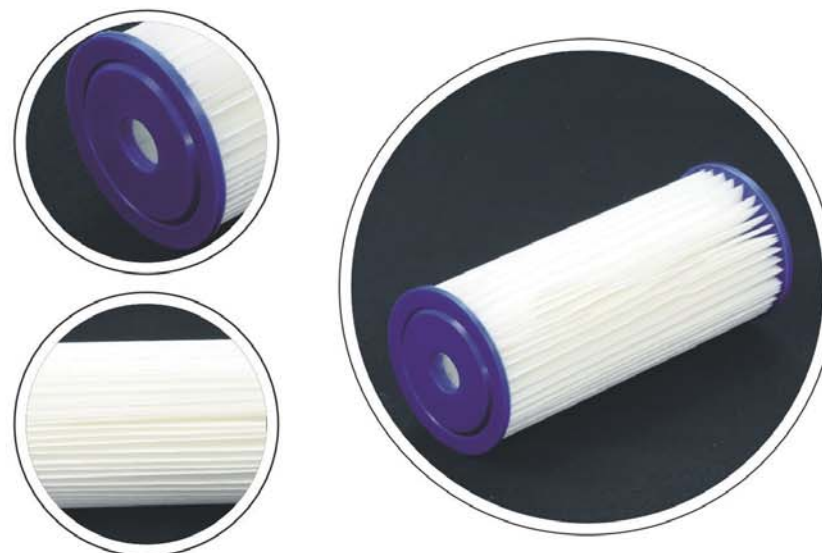
产品特点 / Product characteristics

折叠设计增大过滤面积。
压差低,通量大,延长使用时间。
可清洗,降低成本。

Pleated design increased surface area and contaminant removal.

Longer filtration runs for fewer change-out and less maintenance. Low pressure drop.

Designed for general water filtration purposes.



产品规格 / Product specification

| | |
|--------------------------------------|---|
| 产品尺寸 Dimension | [精度/Removal Rating]: 1um,5um,10um,20um,50um [长度/Length]: 9.84*(250mm), 10*(254mm), 19.68*(500mm), 20*(508mm) [外径/OD]: Ø 68mm, 114mm |
| 结构材料 Material of Constructions | [滤材/Media]: 聚酯纤维、聚丙烯纤维膜/Polyester, Polypropylene Cellulose [端盖/End cap]: PU胶/PU Plasticsol [中心杆/Core]: 聚丙烯/Polypropylene(PP) |
| 技术性 Performance | [最高操作温度/Max. Operating temperature]: 37.8°C [最大压差/Max. Operating DP]: 4.0Bar 由于孔径不同,每10"滤芯的流量介于3-10加仑/分之间。/3-10GPM, depend on removal rating. |

订单信息 / Order Information

| 泳池滤芯无网系列 Series Number | 精度 Removal Rating | 尺寸 Length | 滤材 MEDIA | 外径 OD |
|---------------------------|----------------------|------------------|-------------------------|----------|
| FWSPW | 1um=1 | 9.84*(250mm)=984 | 聚酯纤维/Polyester=PL | 68mm |
| | 5um=5 | 10*(254mm)=10 | 聚丙烯纤维膜/Polypropylene=PP | 114mm |
| | 10um=10 | 19.68*(500mm)=19 | | |
| | 20um=20 | 20*(508mm)=20 | | |
| | 50um=50 | | | |
| 举例 For Example | FWSPW-1-10-PL-68 | | | |
| | FWSPW-10-20-CL-114 | | | |